



<b>Route surveys</b>	<b>Route</b> EE Paldiski – EE Tootsi	<b>Author</b> Fulmenn UAB	
<b>Project no. / Ref.:</b> RM_Tootsi_01T	<b>Dated</b> December 06, 2023	<b>Classification</b> Initial release	Page number 1 of 82

# **PUBLIC ROAD MODIFICATION REQUIREMENTS**

## **PROJECT Tootsi, Estonia**


**DEADLINE for modifications: February 19, 2024**

**TIMEFRAME for transportation of WIND TURBINES:  
March 4, 2024 until June 20, 2024**












<b>Route surveys</b>	<b>Route</b> EE Paldiski – EE Tootsi	<b>Author</b> Fulmenn UAB	
<b>Project no. / Ref.:</b> RM_Tootsi_01T	<b>Dated</b> December 06, 2023	<b>Classification</b> Initial release	Page number 2 of 82


## TABLE OF CONTENTS

1. <u>MARKINGS</u>	3
2. <u>DRAWINGS</u>	4
3. <u>SITE LOCATION AND ROUTING</u>	5
4. <u>TRANSPORT SURVEYS</u>	6
5. <u>NOTES</u>	82

<b>Route surveys</b>	<b>Route</b> EE Paldiski – EE Tootsi	<b>Author</b> Fulmenn UAB	
<b>Project no. / Ref.:</b> RM_Tootsi_01T	<b>Dated</b> December 06, 2023	<b>Classification</b> Initial release	Page number 3 of 82

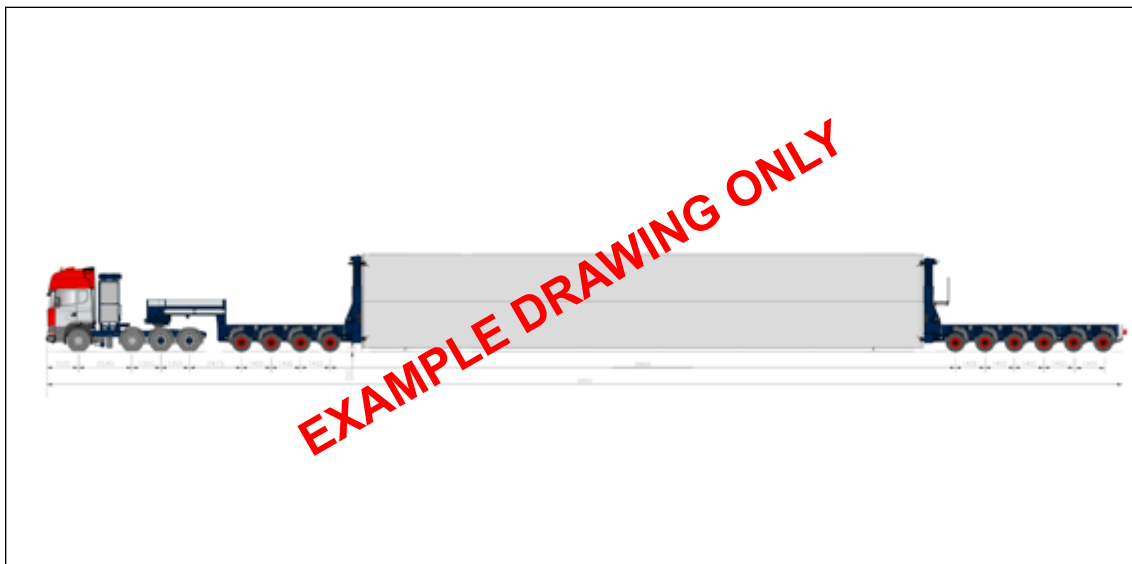
## 1 MARKINGS

Explanatory icon overview “ILLUSTRATIVE DEFINITION”			
	Direction forward		Trees must be cut down / Branches to be pruned
	Direction backward		Must be made drivable and in level with the road
	Road furniture must be removed		Object / obstacle height
	Road furniture is removable		Area belongs to Private Landowner
Explanatory icon overview “SCALE OF DIFFICULTY”			
	Green colour	Modifications are not needed. No Action	
	Orange colour	It is necessary to check if road signs are removable.	
	Red colour	Modifications are needed	


<b>Route surveys</b>	<b>Route</b> EE Paldiski – EE Tootsi	<b>Author</b> Fulmenn UAB	
<b>Project no. / Ref.:</b> RM_Tootsi_01T	<b>Dated</b> December 06, 2023	<b>Classification</b> Initial release	Page number 4 of 82

## 2 DRAWINGS

### TOWER SECTION



Total Dimensions Loaded (LxWxH - Weight) : 56.00 x 5.30 x 5.50m – 155.00 tn.

<b>Route surveys</b>	<b>Route</b> EE Paldiski – EE Tootsi	<b>Author</b> Fulmenn UAB	
<b>Project no. / Ref.:</b> RM_Tootsi_01T	<b>Dated</b> December 06, 2023	<b>Classification</b> Initial release	Page number 5 of 82

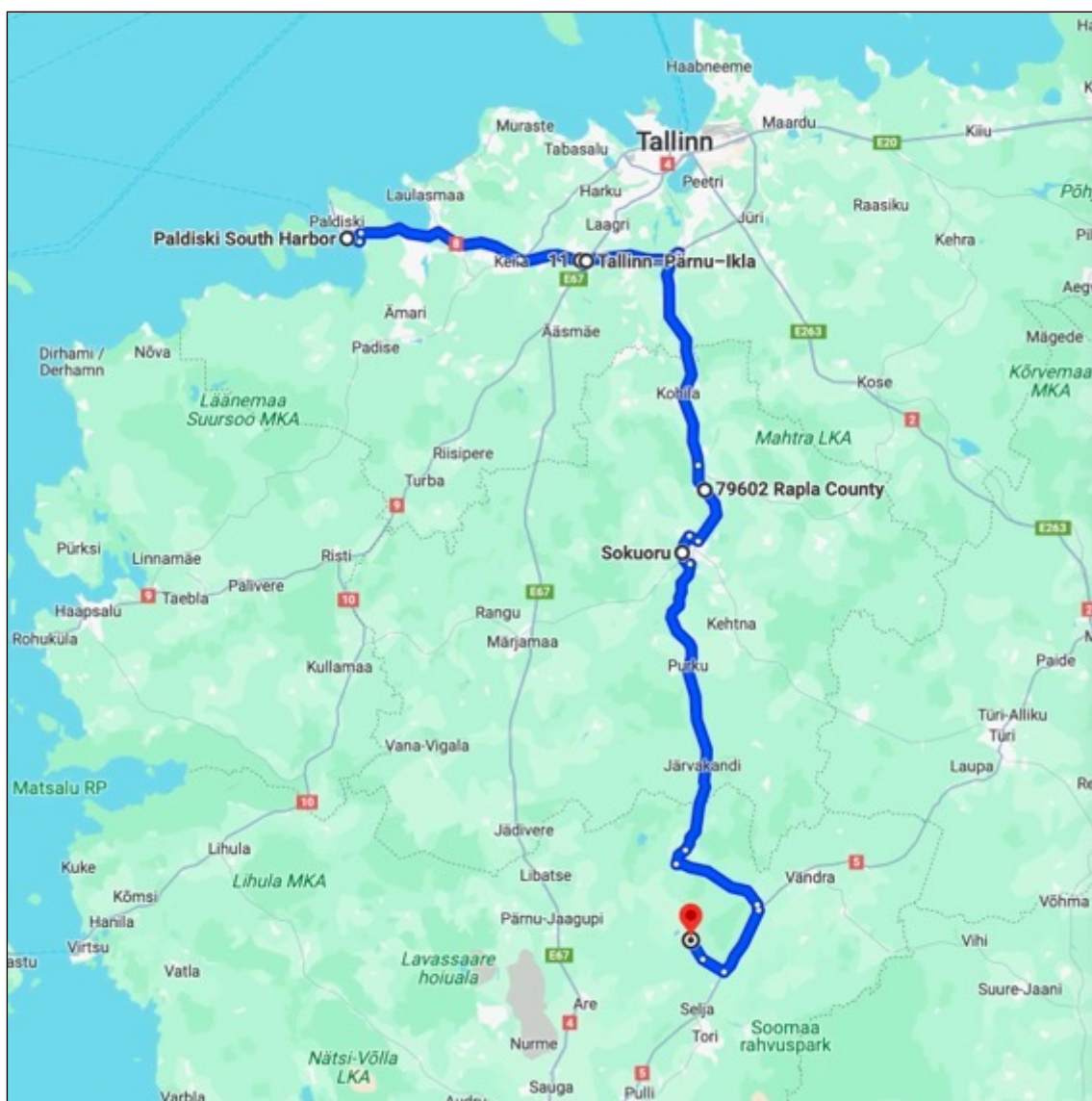
### 3 SITE LOCATION AND ROUTING


#### Description

Brief route description: Paldiski (Koka-Kõrtsu tee – Lõunasadama tee – Soomepoiste tee) – 8 – 11 – 4 – 11 – 15 – 141 – 125 – 27 – 58 – 5 – 271 – Tootsi – RTP 58°35'22.79"N 24°47'1.17"E

Google maps link: <https://maps.app.goo.gl/5Nzf2KbrQvyjgBEg8>

Length of the route **155km**



<b>Route surveys</b>	<b>Route</b> EE Paldiski – EE Tootsi	<b>Author</b> Fulmenn UAB	
<b>Project no. / Ref.:</b> RM_Tootsi_01T	<b>Dated</b> December 06, 2023	<b>Classification</b> Initial release	Page number 6 of 82

#### 4 TRANSPORT SURVEY

Location 1-1, (Koka-Kõrtsu tee, Paldiski) Exit from port of Paldiski. Steel frame



##### Actions:

- Ref. to Location 1-1; 1-2
- Height of the frame 5,55m
- No Action

Google maps coordinates: 59.335247, 24.083227 <https://maps.app.goo.gl/PyWu7ko7N8BJN18v7>

Location 1-1, (Koka-Kõrtsu tee, Paldiski) Exit from port of Paldiski. Information Gate



##### Actions:

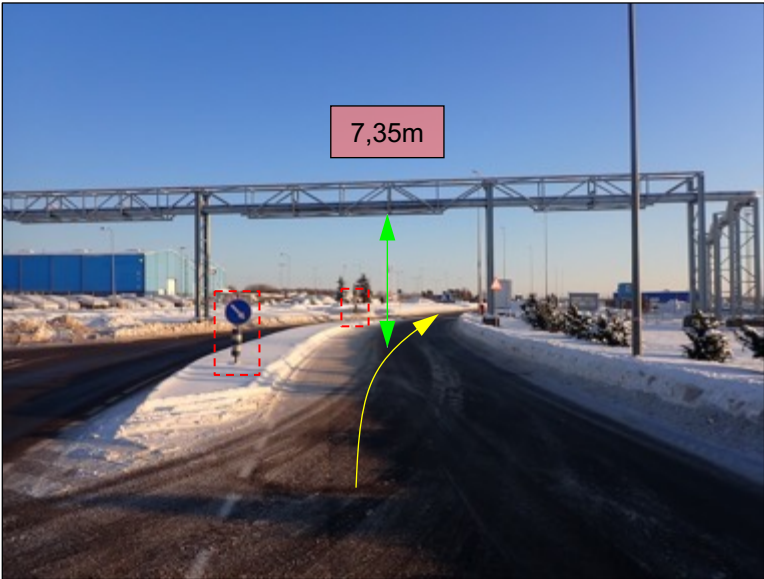
- Ref. to Location 1-1; 1-2

Google maps coordinates: 59.335247, 24.083227 <https://maps.app.goo.gl/PyWu7ko7N8BJN18v7>

Route surveys	Route EE Paldiski – EE Tootsi	Author Fulmenn UAB	
Project no. / Ref.: RM_Tootsi_01T	Dated December 06, 2023	Classification Initial release	Page number 7 of 82

4 TRANSPORT SURVEY

Location 2-1, (Koka-Kõrtsu tee, Paldiski) Traffic island. Pipeline gates



Actions:

- Height of the frame 7,35m
- 2 road signs are removable

Google maps coordinates: 59.334679, 24.090580 <https://maps.app.goo.gl/PuYJKbZrvPLFzaiy8>

Location 3-1, (Lõunasadama tee, Paldiski) Turn left to road 174




Actions:

- Ref. to Locations 3-1; 3-2
- 2 road signs are removable

Google maps coordinates: 59.331211, 24.101895 <https://maps.app.goo.gl/UTTJa316r9GpqQEH9>



<b>Route surveys</b>	<b>Route</b> EE Paldiski – EE Tootsi	<b>Author</b> Fulmenn UAB	
<b>Project no. / Ref.:</b> RM_Tootsi_01T	<b>Dated</b> December 06, 2023	<b>Classification</b> Initial release	Page number 8 of 82

#### 4 TRANSPORT SURVEY

Location 3-2, (Lõunasadama tee, Paldiski) Turn left to road 174

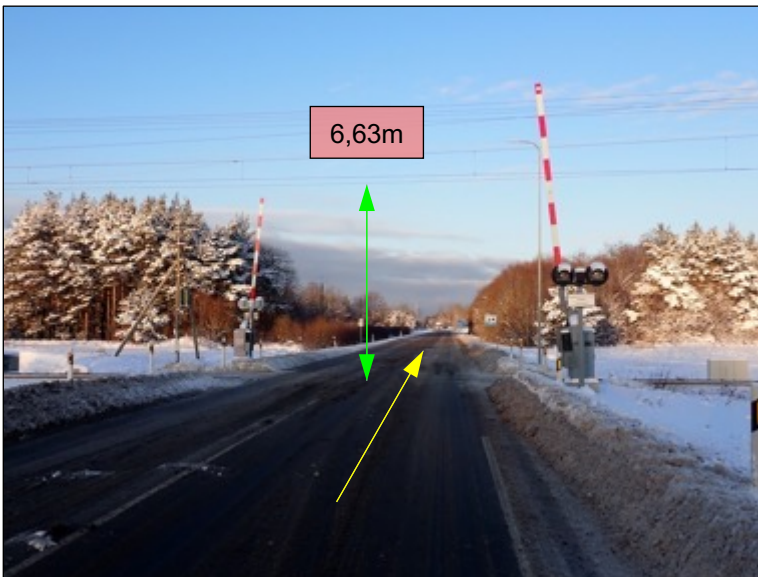


##### Actions:

- Ref. to Locations 3-1; 3-2

Google maps coordinates: 59.331211, 24.101895 <https://maps.app.goo.gl/UTTJa316r9GpqQEH9>

Location 4-1, (Road 174) Electrified railroad crossing




##### Actions:

- Height of the electric line 6,63m
- No Action

Google maps coordinates: 59.336590, 24.103090 <https://maps.app.goo.gl/WzQYWtmrhTNYo7ig9>



<b>Route surveys</b>	<b>Route</b> EE Paldiski – EE Tootsi	<b>Author</b> Fulmenn UAB	
<b>Project no. / Ref.:</b> RM_Tootsi_01T	<b>Dated</b> December 06, 2023	<b>Classification</b> Initial release	Page number 9 of 82

#### 4 TRANSPORT SURVEY

Location 5-1, (Road 174) Turn right to road 8



##### Actions:

- Ref. to Location 5-1; 5-2
- 3 road signs are removable

Google maps coordinates: 59.340181, 24.104351 <https://maps.app.goo.gl/gnKFA1iYfTjnkF63A>


Location 5-2, (Road 174) Turn right to road 8



##### Actions:

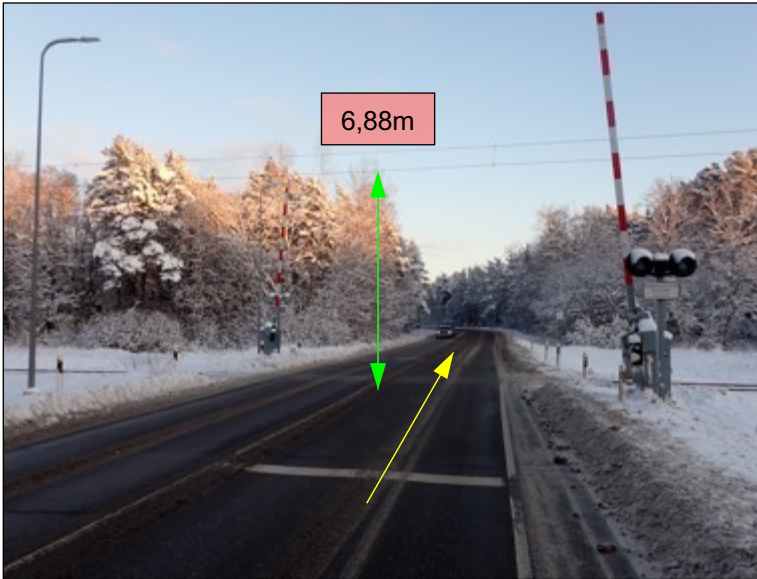
- Ref. to Location 5-1; 5-2

Google maps coordinates: 59.340181, 24.104351 <https://maps.app.goo.gl/gnKFA1iYfTjnkF63A>

<b>Route surveys</b>	<b>Route</b> EE Paldiski – EE Tootsi	<b>Author</b> Fulmenn UAB	
<b>Project no. / Ref.:</b> RM_Tootsi_01T	<b>Dated</b> December 06, 2023	<b>Classification</b> Initial release	Page number 10 of 82

## 4 TRANSPORT SURVEY

### Location 6-1, (Road 8) Electrified railroad crossing

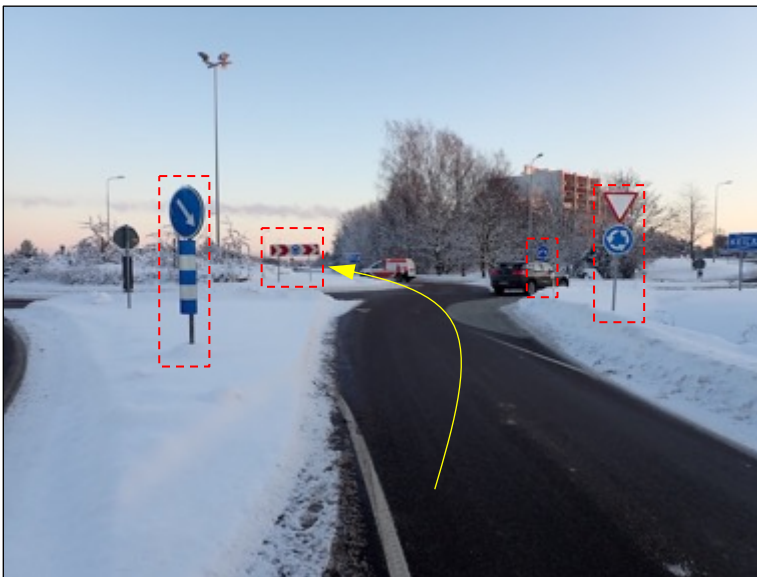


#### Actions:

- Height of the electric line 6,88m
- No Action

Google maps coordinates: 59.336386, 24.243267 <https://maps.app.goo.gl/ptqoqVV4xgaUtV2m8>


### Location 7-1, (Road 8) Roundabout 8/194. Second exit to road 8



#### Actions:

- Ref. to Locations 7-1; 7-2
- 7 road signs are removable

Google maps coordinates: 59.317347, 24.410674 <https://maps.app.goo.gl/kMxg9kKhQwHgNAni9>

Route surveys	Route EE Paldiski – EE Tootsi	Author Fulmenn UAB	
Project no. / Ref.: RM_Tootsi_01T	Dated December 06, 2023	Classification Initial release	Page number 11 of 82

4 TRANSPORT SURVEY

Location 7-2, (Road 8) Roundabout 8/194. Second exit to road 8



Actions:

- Ref. to Locations 7-1; 7-2

Google maps coordinates: 59.317347, 24.410674 <https://maps.app.goo.gl/kMxg9kKhQwHgNAni9>

Ref. to Locations 7-1; 7-2. Swept path No. 1



Google maps coordinates: 59.317347, 24.410674 <https://maps.app.goo.gl/kMxg9kKhQwHgNAni9>

Route surveys	Route EE Paldiski – EE Tootsi	Author Fulmenn UAB	
Project no. / Ref.: RM_Tootsi_01T	Dated December 06, 2023	Classification Initial release	Page number 12 of 82

4 TRANSPORT SURVEY

Location 8-1, (Road 8) Roundabout 8/Piiri. Second exit to road 8



Actions:

- Ref. to Location 8-1; 8-2; 8-3
- 3 road signs are removable
- 1 road sign needs to be made removable

Google maps coordinates: 59.314437, 24.422491 <https://maps.app.goo.gl/Cd9sgZnhZz93TRBZA>

Location 8-2, (Road 8) Roundabout 8/Piiri. Second exit to road 8



Actions:

- Ref. to Location 8-1; 8-2; 8-3

Google maps coordinates: 59.314437, 24.422491 <https://maps.app.goo.gl/Cd9sgZnhZz93TRBZA>



Route surveys	Route EE Paldiski – EE Tootsi	Author Fulmenn UAB	
Project no. / Ref.: RM_Tootsi_01T	Dated December 06, 2023	Classification Initial release	Page number 13 of 82

4 TRANSPORT SURVEY

Location 8-3, (Road 8) Roundabout 8/Piiri. Second exit to road 8



Actions:


- Ref. to Location 8-1; 8-2; 8-3

Google maps coordinates: 59.314437, 24.422491 <https://maps.app.goo.gl/Cd9sgZnhZz93TRBZA>

Ref. to Location 8-1; 8-2; 8-3. Swept path No. 2

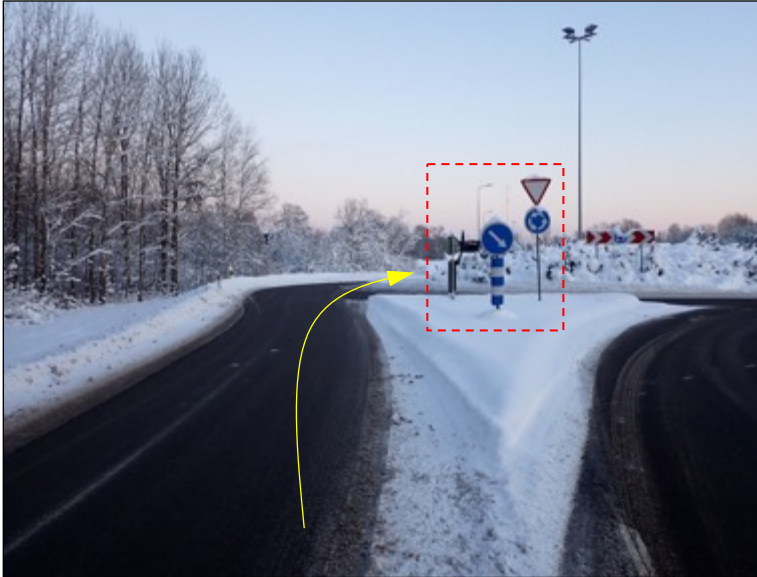


Google maps coordinates: 59.314437, 24.422491 <https://maps.app.goo.gl/Cd9sgZnhZz93TRBZA>

<b>Route surveys</b>	<b>Route</b> EE Paldiski – EE Tootsi	<b>Author</b> Fulmenn UAB	
<b>Project no. / Ref.:</b> RM_Tootsi_01T	<b>Dated</b> December 06, 2023	<b>Classification</b> Initial release	Page number 14 of 82

#### 4 TRANSPORT SURVEY

Location 9-1, (Road 8) Roundabout 8/Põhjakaare. Second exit to road 8 (against the traffic)



##### Actions:

- Ref. to Location 9-1; 9-2; 9-3
- 3 road signs are removable
- 2 road signs need to be removable
- 1 light pole needs to be dismantled
- Temporary road works (surface levelling) are needed in the area marked in blue. Ca. 50,00m2

Google maps coordinates: 59.313088, 24.428476 <https://maps.app.goo.gl/W51RnFoYrsHZkqaT9>

Location 9-2, (Road 8) Roundabout 8/Põhjakaare. Second exit to road 8 (against the traffic)



##### Actions:

- Ref. to Location 9-1; 9-2; 9-3

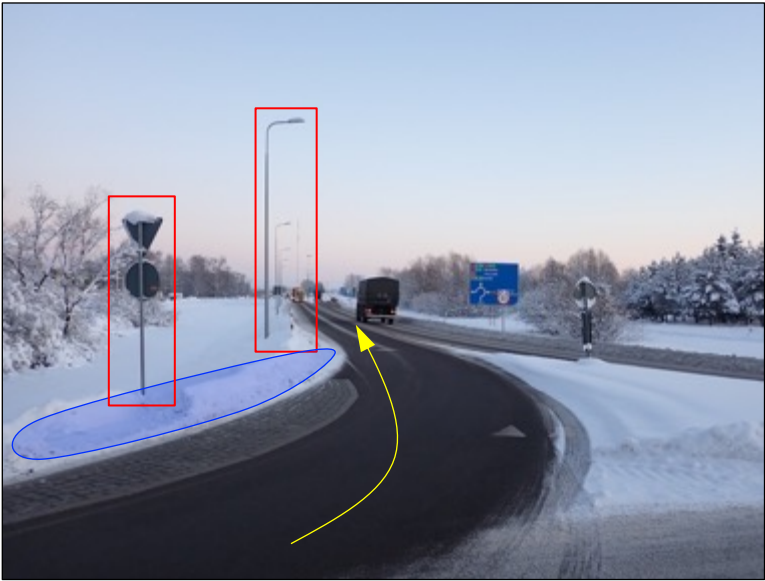
Google maps coordinates: 59.313088, 24.428476 <https://maps.app.goo.gl/W51RnFoYrsHZkqaT9>



Route surveys	Route EE Paldiski – EE Tootsi	Author Fulmenn UAB	
Project no. / Ref.: RM_Tootsi_01T	Dated December 06, 2023	Classification Initial release	Page number 15 of 82

#### 4 TRANSPORT SURVEY

Location 9-3, (Road 8) Roundabout 8/Põhjakaare. Second exit to road 8 (against the traffic)



#### Actions:

- Ref. to Location 9-1; 9-2; 9-3

Google maps coordinates: 59.313088, 24.428476 <https://maps.app.goo.gl/W51RnFoYrsHZkqaT9>

Ref. to Location 9-1; 9-2; 9-3. Swept path No. 3

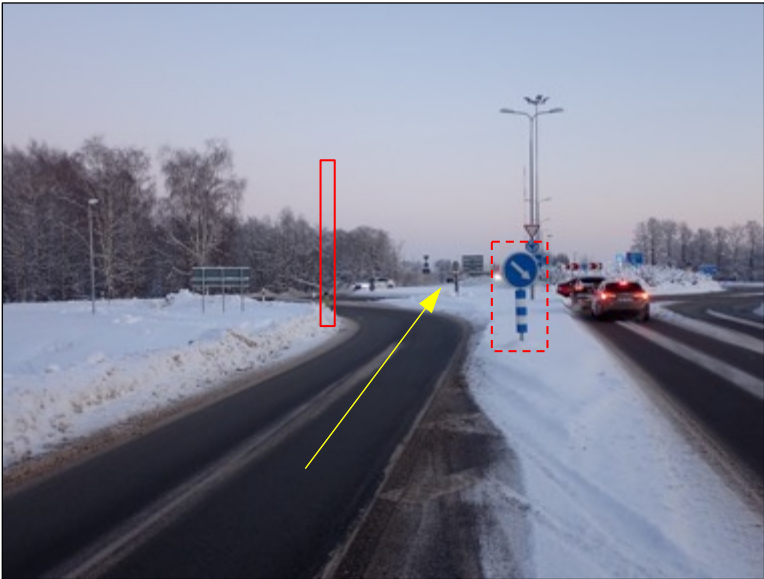


Google maps coordinates: 59.313088, 24.428476 <https://maps.app.goo.gl/W51RnFoYrsHZkqaT9>

Route surveys	Route EE Paldiski – EE Tootsi	Author Fulmenn UAB	
Project no. / Ref.: RM_Tootsi_01T	Dated December 06, 2023	Classification Initial release	Page number 16 of 82

4 TRANSPORT SURVEY

Location 10-1, (Road 8) Roundabout 8/17. Second exit to road 8 (against the traffic)

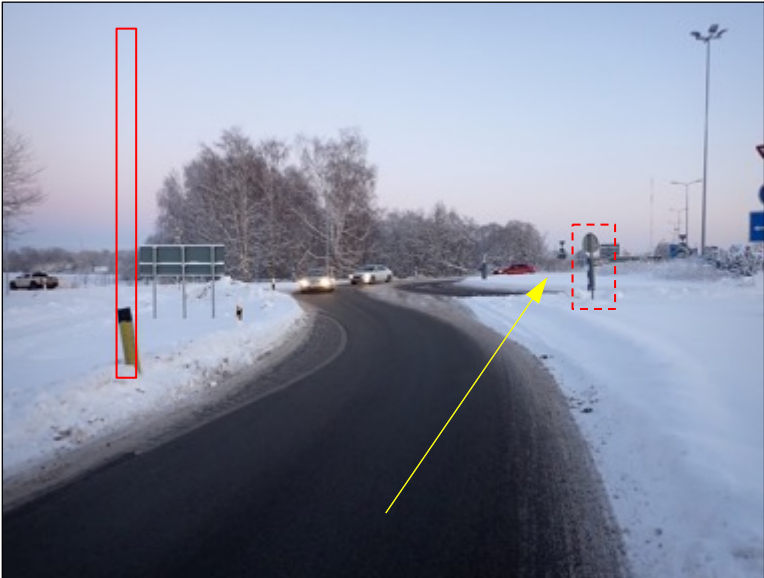


Actions:

- Ref. to Location 10-1; 10-2; 10-3; 10-4
- 4 road signs are removable
- 1 road sign needs to be removable
- 1 light pole needs to be dismantled
- Street furniture TEMPORARY dismantled/not shown in the picture

Google maps coordinates: 59.312110, 24.432896 <https://maps.app.goo.gl/2uP5PdFmYhkUbs7e9>

Location 10-2, (Road 8) Roundabout 8/17. Second exit to road 8 (against the traffic)



Actions:

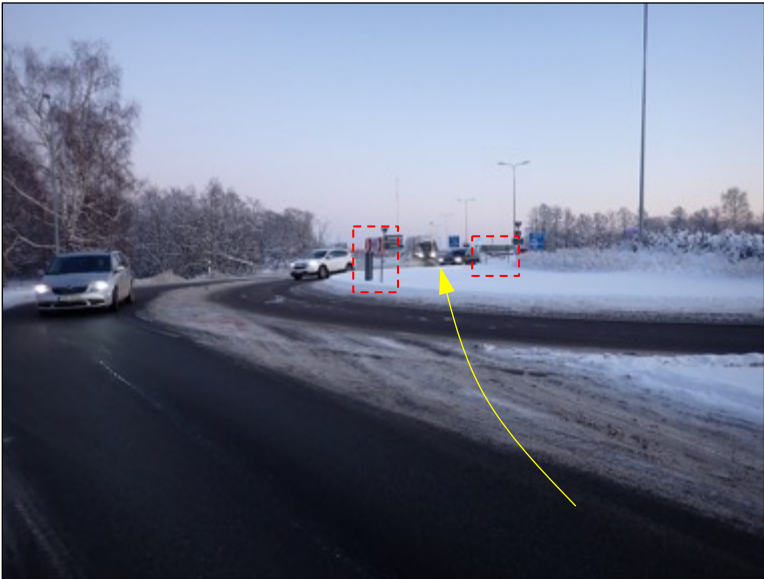
- Ref. to Location 10-1; 10-2; 10-3; 10-4

Google maps coordinates: 59.312110, 24.432896 <https://maps.app.goo.gl/2uP5PdFmYhkUbs7e9>

Route surveys	Route EE Paldiski – EE Tootsi	Author Fulmenn UAB	
Project no. / Ref.: RM_Tootsi_01T	Dated December 06, 2023	Classification Initial release	Page number 17 of 82

4 TRANSPORT SURVEY

Location 10-3, (Road 8) Roundabout 8/17. Second exit to road 8 (against the traffic)



Actions:

- Ref. to Location 10-1; 10-2; 10-3; 10-4

Google maps coordinates: 59.312110, 24.432896 <https://maps.app.goo.gl/2uP5PdFmYhkUbs7e9>

Location 10-4, (Road 8) Roundabout 8/17. Second exit to road 8 (against the traffic)



Actions:

- Ref. to Location 10-1; 10-2; 10-3; 10-4

Google maps coordinates: 59.312110, 24.432896 <https://maps.app.goo.gl/2uP5PdFmYhkUbs7e9>

Route surveys	Route EE Paldiski – EE Tootsi	Author Fulmenn UAB	
Project no. / Ref.: RM_Tootsi_01T	Dated December 06, 2023	Classification Initial release	Page number 18 of 82

4 TRANSPORT SURVEY

Ref. to Location 10-1; 10-2; 10-3; 10-4. Swept path No. 4



Google maps coordinates: 59.312110, 24.432896 <https://maps.app.goo.gl/2uP5PdFmYhkUbs7e9>

Location 11-1, (Road 8) Roundabout 8/11. Second exit to road 11 (against the traffic)




Actions:

- Ref. to Locations 11-1; 11-2; 11-3
- 2 road signs are removable
- 1 road sign needs to be made removable

Google maps coordinates: 59.311188, 24.436605 <https://maps.app.goo.gl/sBC6QP2SSWTHkKBz6>



<b>Route surveys</b>	<b>Route</b> EE Paldiski – EE Tootsi	<b>Author</b> Fulmenn UAB	
<b>Project no. / Ref.:</b> RM_Tootsi_01T	<b>Dated</b> December 06, 2023	<b>Classification</b> Initial release	Page number 19 of 82

#### 4 TRANSPORT SURVEY

Location 11-2, (Road 8) Roundabout 8/11. Second exit to road 11 (against the traffic)



##### **Actions:**

- Ref. to Locations 11-1; 11-2; 11-3

Google maps coordinates: 59.311188, 24.436605 <https://maps.app.goo.gl/sBC6QP2SSWTHkKBz6>

Location 11-3, (Road 8) Roundabout 8/11. Second exit to road 11 (against the traffic)



##### **Actions:**

- Ref. to Locations 11-1; 11-2; 11-3

Google maps coordinates: 59.311188, 24.436605 <https://maps.app.goo.gl/sBC6QP2SSWTHkKBz6>

Route surveys	Route EE Paldiski – EE Tootsi	Author Fulmenn UAB	
Project no. / Ref.: RM_Tootsi_01T	Dated December 06, 2023	Classification Initial release	Page number 20 of 82

4 TRANSPORT SURVEY

Ref. to Locations 11-1; 11-2; 11-3. Swept path No. 5



Google maps coordinates: 59.311188, 24.436605 <https://maps.app.goo.gl/sBC6QP2SSWTHkKBz6>

Location 12-1, (Road 11) Exit ongoing traffic lane




Actions:

- No Action

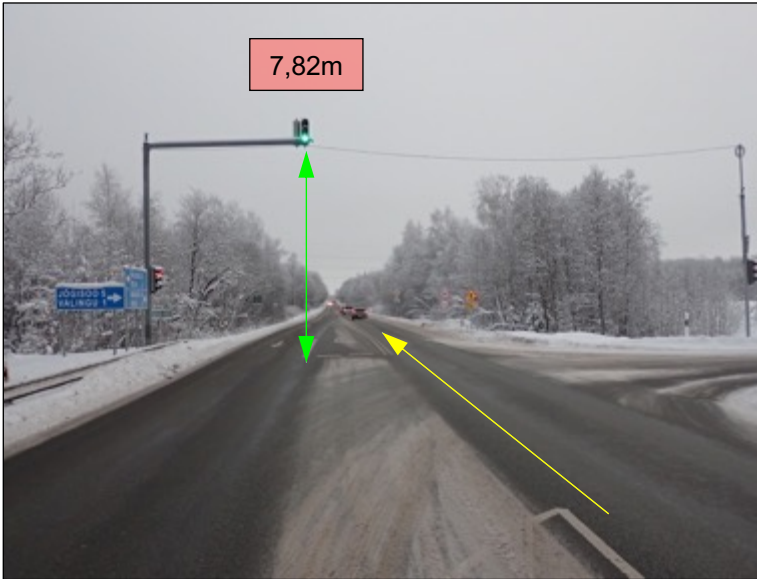
Google maps coordinates: 59.310470, 24.440755 <https://maps.app.goo.gl/1NdEnAGTNmqp2Xhh9>



<b>Route surveys</b>	<b>Route</b> EE Paldiski – EE Tootsi	<b>Author</b> Fulmenn UAB	
<b>Project no. / Ref.:</b> RM_Tootsi_01T	<b>Dated</b> December 06, 2023	<b>Classification</b> Initial release	Page number 21 of 82

#### 4 TRANSPORT SURVEY

##### Location 13-1, (Road 11) Traffic light



##### Actions:

- Height of the traffic light 7,82m
- No Action

Google maps coordinates: 59.313553, 24.471949 <https://maps.app.goo.gl/CGhQ4DnTo4xsVjNi9>

##### Location 14-1, (Road 11) Slight left on the main road



##### Actions:

- 2 road signs need to be made removable

Google maps coordinates: 59.317052, 24.503612 <https://maps.app.goo.gl/N9uHYJUDYHRNUzGW6>

Route surveys	Route EE Paldiski – EE Tootsi	Author Fulmenn UAB	
Project no. / Ref.: RM_Tootsi_01T	Dated December 06, 2023	Classification Initial release	Page number 22 of 82

4 TRANSPORT SURVEY

Location 15-1, (Road 11) Steel frame

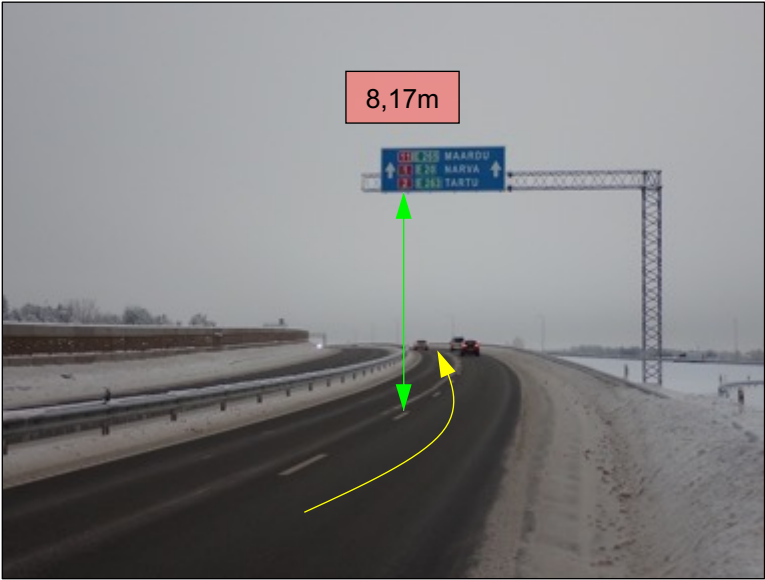


Actions:

- Height of the frame 8,21m
- No Action

Google maps coordinates: 59.316621, 24.516977 <https://maps.app.goo.gl/rUCdBUN9ntuHmMZN7>


Location 16-1, (Road 11) Steel frame



Actions:

- Height of the frame 8,17m
- No Action

Google maps coordinates: 59.311119, 24.554053 <https://maps.app.goo.gl/VDaHw5CGi9af6t5Y9>

Route surveys	Route EE Paldiski – EE Tootsi	Author Fulmenn UAB	
Project no. / Ref.: RM_Tootsi_01T	Dated December 06, 2023	Classification Initial release	Page number 23 of 82

4 TRANSPORT SURVEY

Location 17-1, (Road 11) Steel frame



Actions:

- Height of the frame 7,83m
- No Action

Google maps coordinates: 59.312113, 24.561330 <https://maps.app.goo.gl/5YT4FWyPpxNE6EqU9>


Location 18-1, (Road 11) Steel frame



Actions:

- Height of the frame 7,22m
- No Action

Google maps coordinates: 59.312848, 24.565399 <https://maps.app.goo.gl/3AvWN7NDcPp7MVvE9>

<b>Route surveys</b>	<b>Route</b> EE Paldiski – EE Tootsi	<b>Author</b> Fulmenn UAB	
<b>Project no. / Ref.:</b> RM_Tootsi_01T	<b>Dated</b> December 06, 2023	<b>Classification</b> Initial release	Page number 24 of 82

## 4 TRANSPORT SURVEY

Location 19-1, (Road 11) Exit right to road 4



### Actions:

- Ref. to Location 19-1; 19-2; 19-3
- 1 road sign needs to be made removable

Google maps coordinates: 59.312830, 24.570678 <https://maps.app.goo.gl/iZBeYCSfGVDcSgCr9>


Location 19-2, (Road 11) Exit right to road 4



### Actions:

- Ref. to Location 19-1; 19-2; 19-3

Google maps coordinates: 59.312830, 24.570678 <https://maps.app.goo.gl/iZBeYCSfGVDcSgCr9>

Route surveys	Route EE Paldiski – EE Tootsi	Author Fulmenn UAB	
Project no. / Ref.: RM_Tootsi_01T	Dated December 06, 2023	Classification Initial release	Page number 25 of 82

4 TRANSPORT SURVEY

Location 19-3, (Road 11) Exit right to road 4



Actions:

- Ref. to Location 19-1; 19-2; 19-3

Google maps coordinates: 59.312830, 24.570678 <https://maps.app.goo.gl/iZBeYCSfGVDcSgCr9>

Location 20-1, (Road 4) Turn around on road 4



Actions:

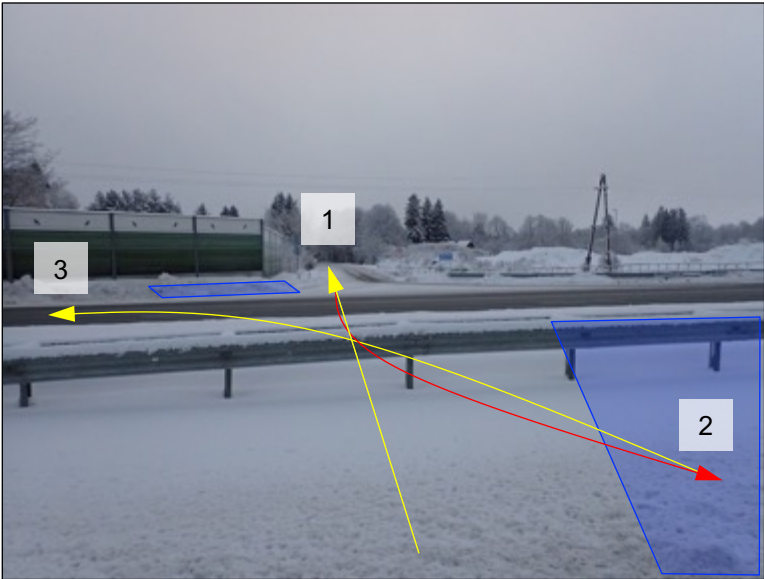
- Ref. to Locations 20-1; 20-2; 20-3; 20-4
- 1 light pole needs to be dismantled
- 2 road signs need to be made removable
- Ca. 40,00m of crash barriers need to be dismantled
- Temporary road works are needed in the area marked in blue. Ca. 100,00m<sup>2</sup>
- Driving directions:
  - 1 – forward
  - 2 – backwards
  - 3 – forward

Google maps coordinates: 59.309543, 24.569895 <https://maps.app.goo.gl/azRHcrEUUkWgVFW96>

Route surveys	Route EE Paldiski – EE Tootsi	Author Fulmenn UAB	
Project no. / Ref.: RM_Tootsi_01T	Dated December 06, 2023	Classification Initial release	Page number 26 of 82

4     **TRANSPORT SURVEY**

Location 20-2, (Road 4) Turn around on road 4

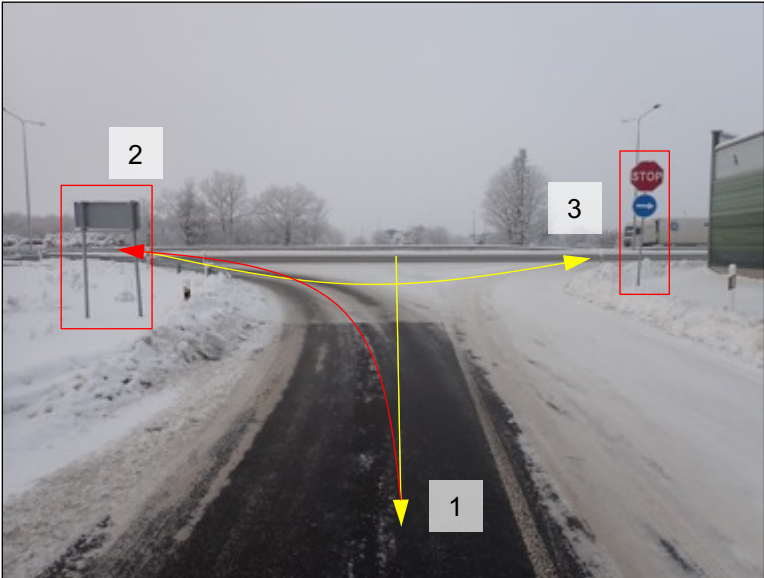


**Actions:**

- Ref. to Locations 20-1; 20-2; 20-3; 20-4

Google maps coordinates:    59.309543, 24.569895 <https://maps.app.goo.gl/azRHcrEUUkWgVFW96>

Location 20-3, (Road 4) Turn around on road 4



**Actions:**

- Ref. to Locations 20-1; 20-2; 20-3; 20-4

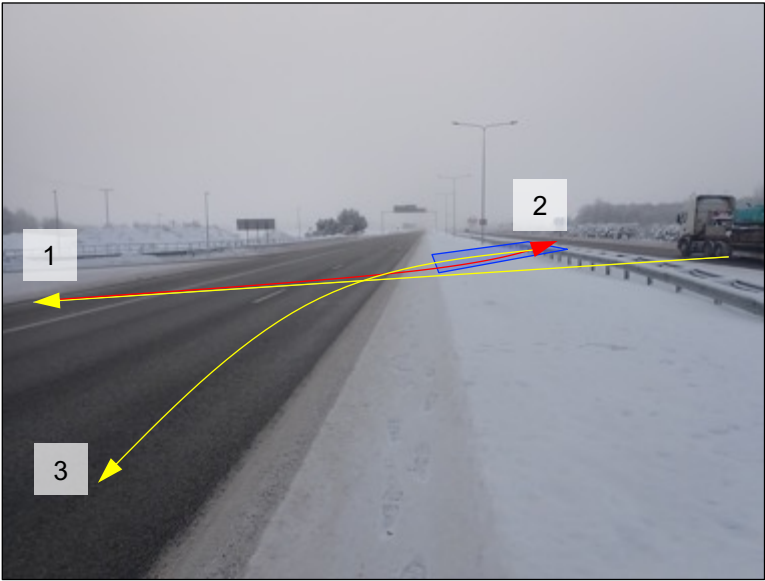
Google maps coordinates:    59.309543, 24.569895 <https://maps.app.goo.gl/azRHcrEUUkWgVFW96>



Route surveys	Route EE Paldiski – EE Tootsi	Author Fulmenn UAB	
Project no. / Ref.: RM_Tootsi_01T	Dated December 06, 2023	Classification Initial release	Page number 27 of 82

#### 4 TRANSPORT SURVEY

Location 20-4, (Road 4) Turn around on road 4

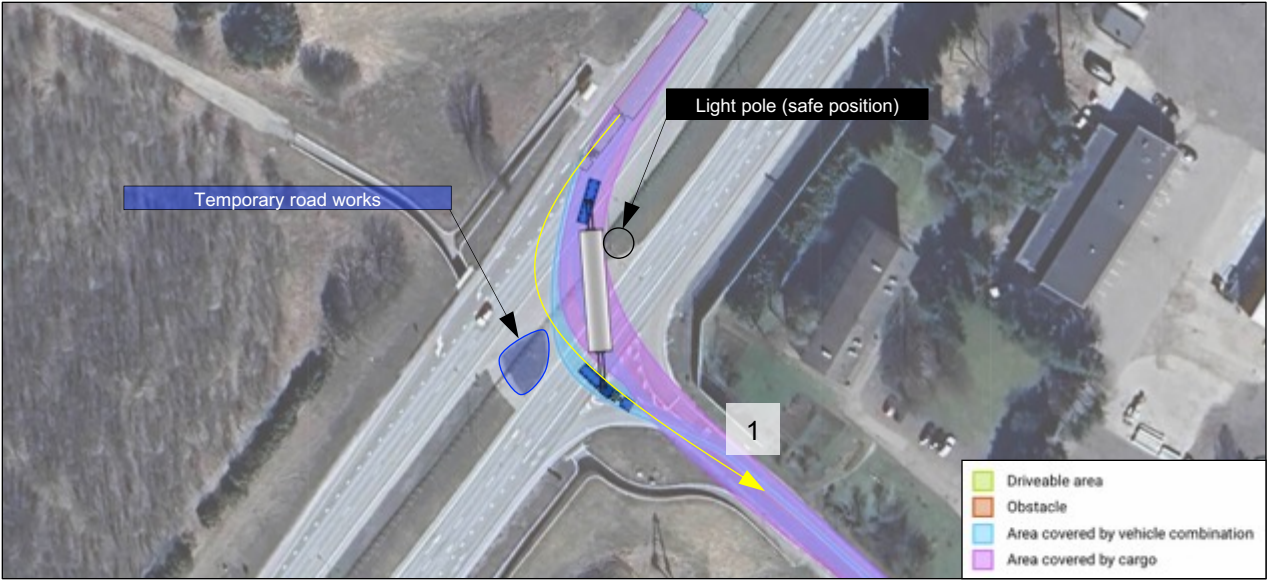


#### Actions:

- Ref. to Locations 20-1; 20-2; 20-3; 20-4

Google maps coordinates: 59.309543, 24.569895 <https://maps.app.goo.gl/azRHcrEUUkWgVFW96>

Ref. to Locations 20-1; 20-2; 20-3; 20-4. Swept path No. 6

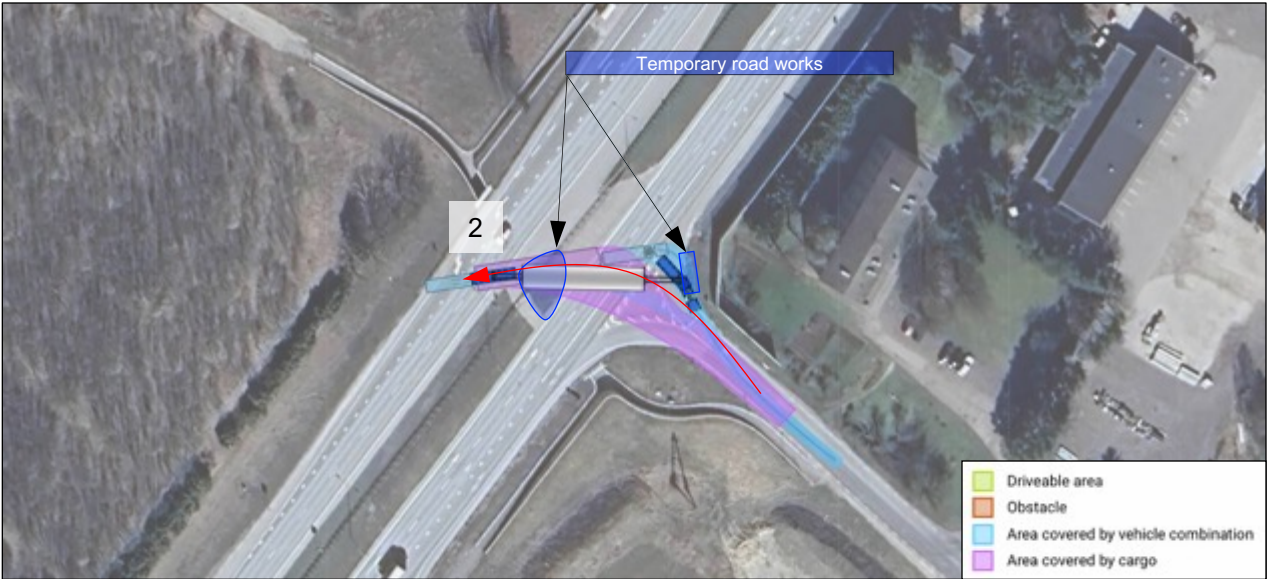


Google maps coordinates: 59.309543, 24.569895 <https://maps.app.goo.gl/azRHcrEUUkWgVFW96>

Route surveys	Route EE Paldiski – EE Tootsi	Author Fulmenn UAB	
Project no. / Ref.: RM_Tootsi_01T	Dated December 06, 2023	Classification Initial release	Page number 28 of 82

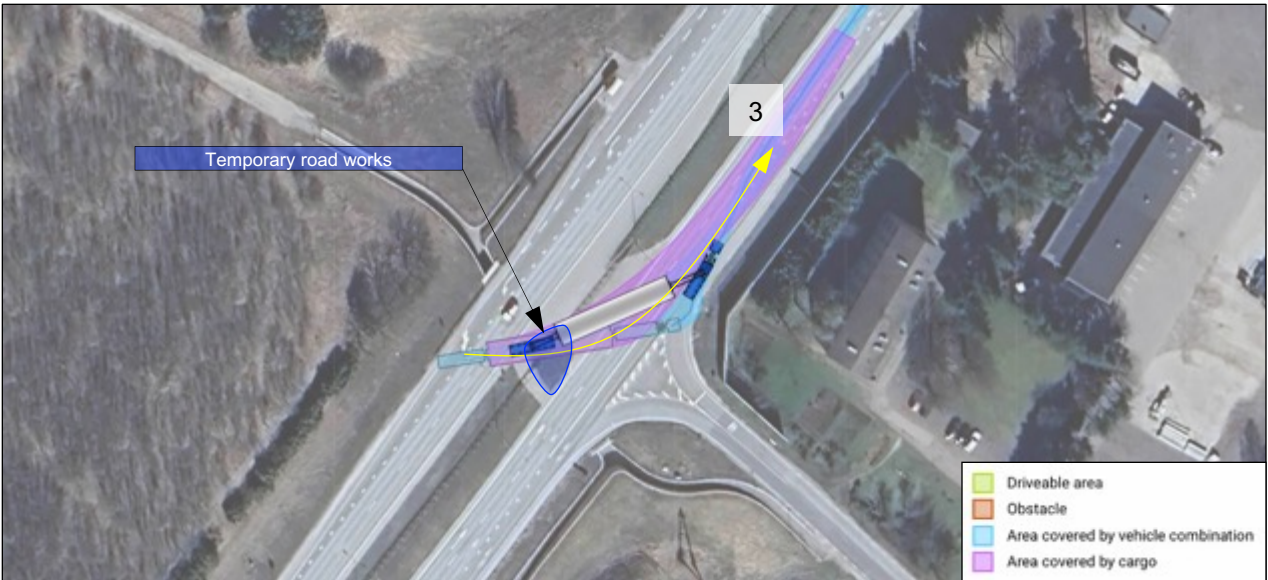
4 TRANSPORT SURVEY

Ref. to Locations 20-1; 20-2; 20-3; 20-4. Swept path No. 7




Google maps coordinates: 59.309543, 24.569895 <https://maps.app.goo.gl/azRHcrEUUkWgVFW96>

Ref. to Locations 20-1; 20-2; 20-3; 20-4. Swept path No. 8



Google maps coordinates: 59.309543, 24.569895 <https://maps.app.goo.gl/azRHcrEUUkWgVFW96>

<b>Route surveys</b>	<b>Route</b> EE Paldiski – EE Tootsi	<b>Author</b> Fulmenn UAB	
<b>Project no. / Ref.:</b> RM_Tootsi_01T	<b>Dated</b> December 06, 2023	<b>Classification</b> Initial release	Page number 29 of 82

#### 4 TRANSPORT SURVEY

Location 21-1, (Road 4) Exit right to road 11



##### Actions:

- Ref. to Location 21-1; 21-2; 21-3
- No Action

Google maps coordinates: 59.311647, 24.576899 <https://maps.app.goo.gl/718an1JTDniB6WtY7>

Location 21-2, (Road 4) Exit right to road 11




##### Actions:

- Ref. to Location 21-1; 21-2; 21-3

Google maps coordinates: 59.311647, 24.576899 <https://maps.app.goo.gl/718an1JTDniB6WtY7>



<b>Route surveys</b>	<b>Route</b> EE Paldiski – EE Tootsi	<b>Author</b> Fulmenn UAB	
<b>Project no. / Ref.:</b> RM_Tootsi_01T	<b>Dated</b> December 06, 2023	<b>Classification</b> Initial release	Page number 30 of 82

#### 4 TRANSPORT SURVEY

Location 21-3, (Road 4) Exit right to road 11

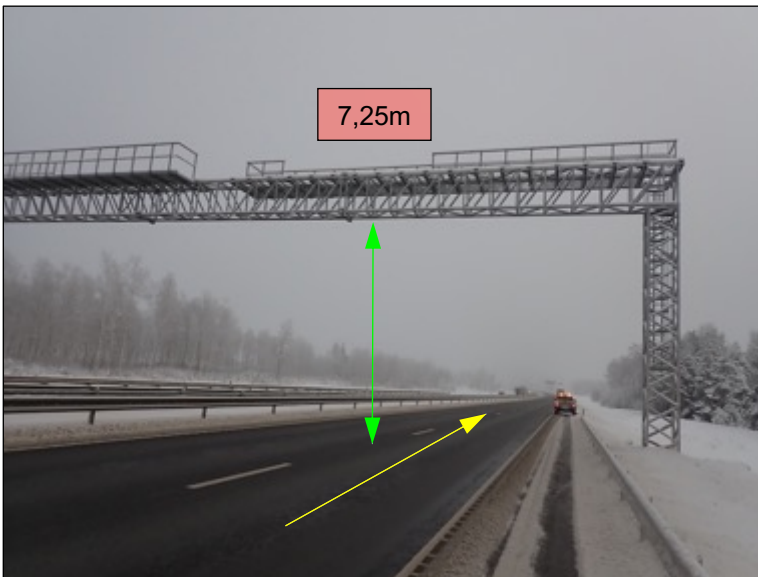


##### Actions:

- Ref. to Location 21-1; 21-2; 21-3

Google maps coordinates: 59.311647, 24.576899 <https://maps.app.goo.gl/718an1JTDniB6WtY7>


Location 22-1, (Road 11) Steel frame



##### Actions:

- Height of the frame 7,25m
- No Action

Google maps coordinates: 59.312555, 24.598255 <https://maps.app.goo.gl/AjB7NkEidnZkqa4z6>

Route surveys	Route EE Paldiski – EE Tootsi	Author Fulmenn UAB	
Project no. / Ref.: RM_Tootsi_01T	Dated December 06, 2023	Classification Initial release	Page number 31 of 82

4 TRANSPORT SURVEY

Location 23-1, (Road 11) Steel frame



Actions:

- Height of the frame 7,57m
- No Action

Google maps coordinates: 59.312594, 24.604332 <https://maps.app.goo.gl/PZhNgTiMWhuxEHyW7>

Location 24-1, (Road 11) Steel frame




Actions:

- Height of the frame 7,55m
- No Action

Google maps coordinates: 59.314899, 24.631562 <https://maps.app.goo.gl/c8xMAhvbaksLgsk3A>



<b>Route surveys</b>	<b>Route</b> EE Paldiski – EE Tootsi	<b>Author</b> Fulmenn UAB	
<b>Project no. / Ref.:</b> RM_Tootsi_01T	<b>Dated</b> December 06, 2023	<b>Classification</b> Initial release	Page number 32 of 82

#### 4 TRANSPORT SURVEY

##### Location 25-1, (Road 11) Bridge

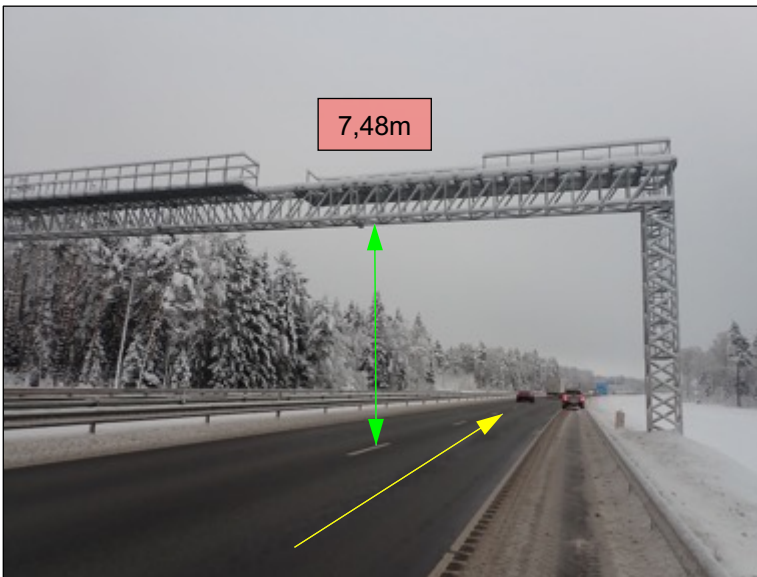


##### Actions:

- Height of the bridge  
5,80m/5,85m/5,88m/5,93m
- No Action

Google maps coordinates: 59.315557, 24.641616 <https://maps.app.goo.gl/kAUhv9FhwcG1Yswv9>


##### Location 26-1, (Road 11) Steel frame



##### Actions:

- Height of the frame 7,48m
- No Action

Google maps coordinates: 59.316520, 24.663601 <https://maps.app.goo.gl/3tnYh3doZB4aNJ429>

Route surveys	Route EE Paldiski – EE Tootsi	Author Fulmenn UAB	
Project no. / Ref.: RM_Tootsi_01T	Dated December 06, 2023	Classification Initial release	Page number 33 of 82

4 TRANSPORT SURVEY

Location 27-1, (Road 11) Steel frame

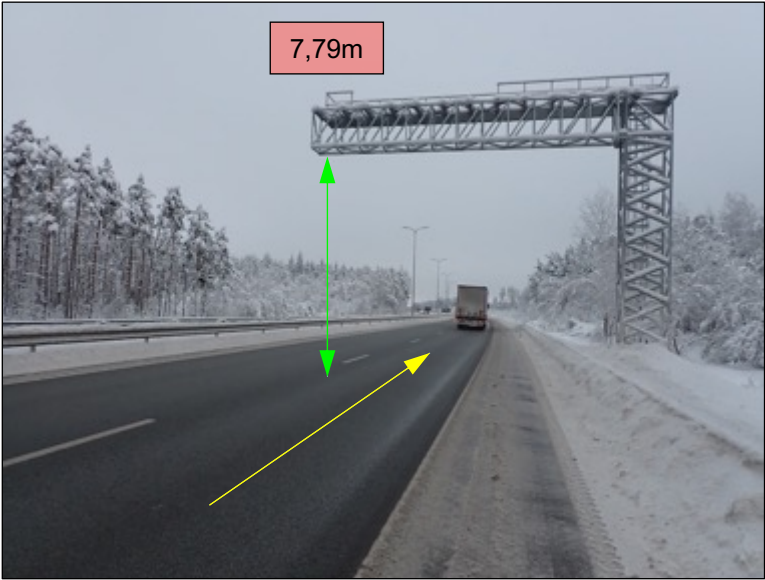


Actions:

- Height of the frame 8,17m
- No Action

Google maps coordinates: 59.316099, 24.670891 <https://maps.app.goo.gl/Ai5MsP2W2i5UWACG6>

Location 28-1, (Road 11) Steel frame



Actions:

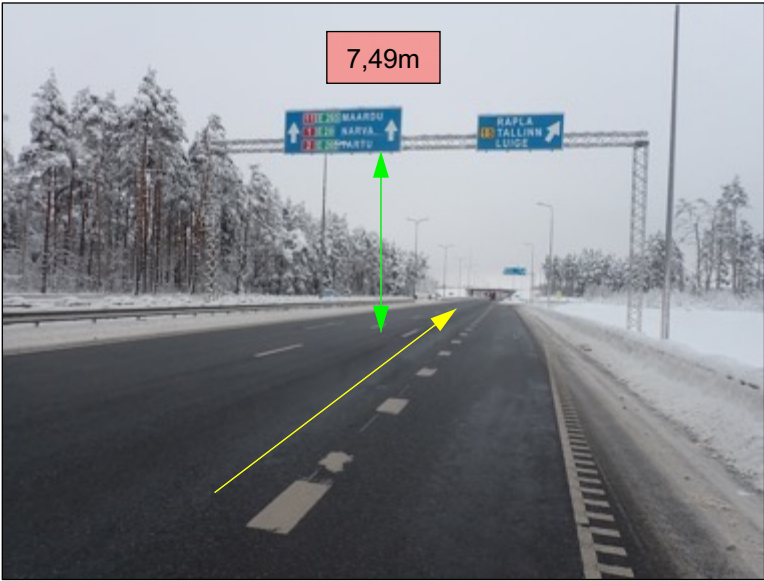
- Height of the frame 7,79m
- No Action

Google maps coordinates: 59.314131, 24.746292 <https://maps.app.goo.gl/F3493BrrPACQ6zN68>

Route surveys	Route EE Paldiski – EE Tootsi	Author Fulmenn UAB	
Project no. / Ref.: RM_Tootsi_01T	Dated December 06, 2023	Classification Initial release	Page number 34 of 82

4 TRANSPORT SURVEY

Location 29-1, (Road 11) Steel frame



Actions:

- Height of the frame 7,49m
- No Action

Google maps coordinates: 59.318783, 24.758340 <https://maps.app.goo.gl/Mf1macZ2Lf8mebWdA>


Location 30-1, (Road 11) Steel frame



Actions:

- Height of the frame 6,36m
- No Action

Google maps coordinates: 59.319315, 24.759646 <https://maps.app.goo.gl/SiZz2qUe2es3rbP17>

<b>Route surveys</b>	<b>Route</b> EE Paldiski – EE Tootsi	<b>Author</b> Fulmenn UAB	
<b>Project no. / Ref.:</b> RM_Tootsi_01T	<b>Dated</b> December 06, 2023	<b>Classification</b> Initial release	Page number 35 of 82

#### 4 TRANSPORT SURVEY

Location 31-1, (Road 11) Turn right to road 15



##### Actions:

- Ref. to Location 31-1; 31-2
- 1 road sign needs to be made removable

Google maps coordinates: 59.319530, 24.760720 <https://maps.app.goo.gl/tWCtKZet2MfUCKQi9>

Location 31-2, (Road 11) Turn right to road 15



##### Actions:

- Ref. to Location 31-1; 31-2

Google maps coordinates: 59.319530, 24.760720 <https://maps.app.goo.gl/tWCtKZet2MfUCKQi9>



Route surveys	Route EE Paldiski – EE Tootsi	Author Fulmenn UAB	
Project no. / Ref.: RM_Tootsi_01T	Dated December 06, 2023	Classification Initial release	Page number 36 of 82

4 TRANSPORT SURVEY

Location 32-1, (Road 15) Roundabout 15/157. First exit to road 15

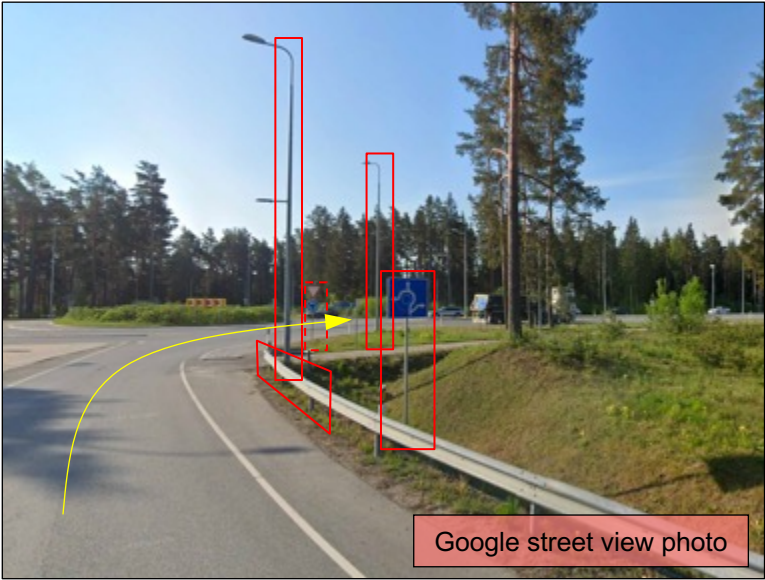


Actions:

- Ref. to Location 32-1; 32-2; 32-3; 32-4; 32-5; 32-6
- 2 road signs are removable
- 3 road signs need to be made removable
- 3 light poles need to be dismantled
- 2 segments of crash barriers need to be dismantled

Google maps coordinates: 59.319132, 24.761879 <https://maps.app.goo.gl/4FiCFTni75wEz5Lz5>

Location 32-2, (Road 15) Roundabout 15/157. First exit to road 15



Google street view photo

Actions:

- Ref. to Location 32-1; 32-2; 32-3; 32-4; 32-5; 32-6

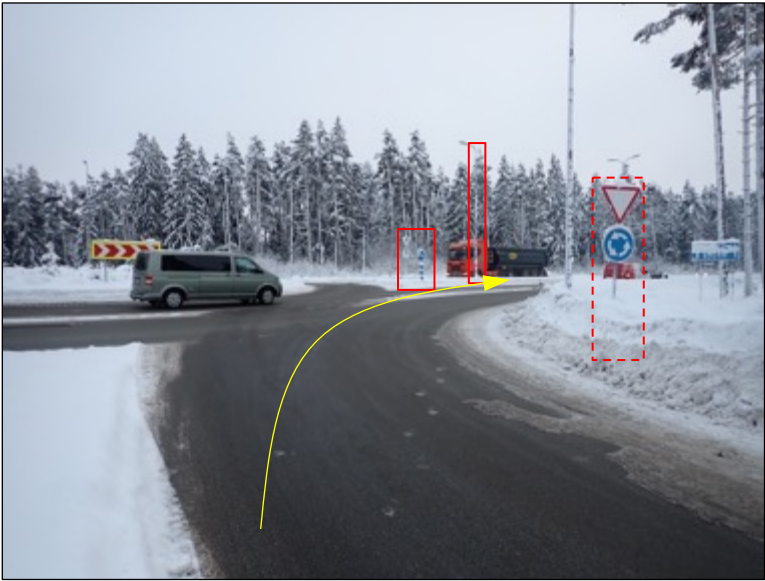
Google maps coordinates: 59.319132, 24.761879 <https://maps.app.goo.gl/4FiCFTni75wEz5Lz5>



Route surveys	Route EE Paldiski – EE Tootsi	Author Fulmenn UAB	
Project no. / Ref.: RM_Tootsi_01T	Dated December 06, 2023	Classification Initial release	Page number 37 of 82

4 TRANSPORT SURVEY

Location 32-3, (Road 15) Roundabout 15/157. First exit to road 15



Actions:

- Ref. to Location 32-1; 32-2; 32-3; 32-4; 32-5; 32-6

Google maps coordinates: 59.319132, 24.761879 <https://maps.app.goo.gl/4FiCFTni75wEz5Lz5>

Location 32-4, (Road 15) Roundabout 15/157. First exit to road 15



Actions:

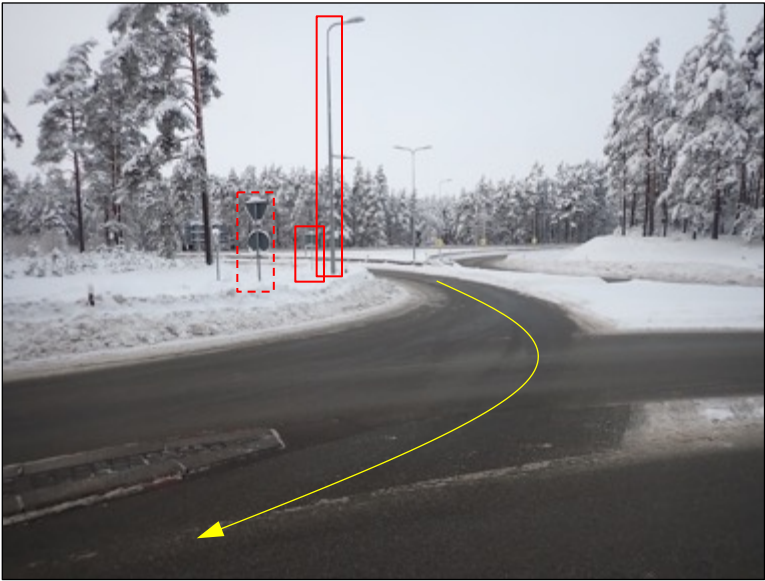
- Ref. to Location 32-1; 32-2; 32-3; 32-4; 32-5; 32-6

Google maps coordinates: 59.319132, 24.761879 <https://maps.app.goo.gl/4FiCFTni75wEz5Lz5>

Route surveys	Route EE Paldiski – EE Tootsi	Author Fulmenn UAB	
Project no. / Ref.: RM_Tootsi_01T	Dated December 06, 2023	Classification Initial release	Page number 38 of 82

4 TRANSPORT SURVEY

Location 32-5, (Road 15) Roundabout 15/157. First exit to road 15



Actions:

- Ref. to Location 32-1; 32-2; 32-3; 32-4; 32-5; 32-6

Google maps coordinates: 59.319132, 24.761879 <https://maps.app.goo.gl/4FiCFTni75wEz5Lz5>

Location 32-6, (Road 15) Roundabout 15/157. First exit to road 15



Actions:

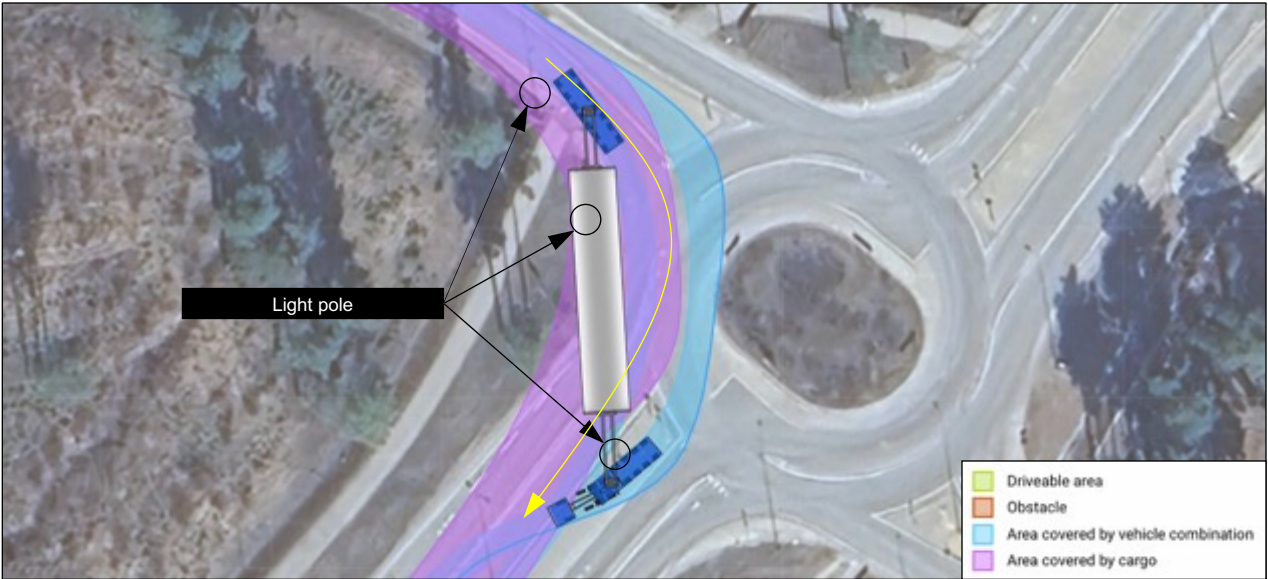
- Ref. to Location 32-1; 32-2; 32-3; 32-4; 32-5; 32-6

Google maps coordinates: 59.319132, 24.761879 <https://maps.app.goo.gl/4FiCFTni75wEz5Lz5>

Route surveys	Route EE Paldiski – EE Tootsi	Author Fulmenn UAB	
Project no. / Ref.: RM_Tootsi_01T	Dated December 06, 2023	Classification Initial release	Page number 39 of 82

4 TRANSPORT SURVEY

Ref. to Location 32-1; 32-2; 32-3; 32-4; 32-5; 32-6. Swept path No. 9



Google maps coordinates: 59.319132, 24.761879 <https://maps.app.goo.gl/4FiCFTni75wEz5Lz5>


Location 33-1, (Road 15) Traffic island



Actions:

- No Action

Google maps coordinates: 59.308348, 24.744611 <https://maps.app.goo.gl/ucPWqBWcktYKGpnEA>

Route surveys	Route EE Paldiski – EE Tootsi	Author Fulmenn UAB	
Project no. / Ref.: RM_Tootsi_01T	Dated December 06, 2023	Classification Initial release	Page number 40 of 82

4 TRANSPORT SURVEY

Location 34-1, (Road 15) Traffic island



Actions:

- 1 road sign is removable

Google maps coordinates: 59.307002, 24.743578 <https://maps.app.goo.gl/JbYQdRHpgQqJX6SU6>

Location 35-1, (Road 15) Narrow road section




Actions:

- Ref. to Location 35-1; 35-2
- 1 road sign needs to be made removable
- All plastic poles on the right side of the road needs to be removed to provide side clearance of 5,30m on the route from Location 35 to Location 38.

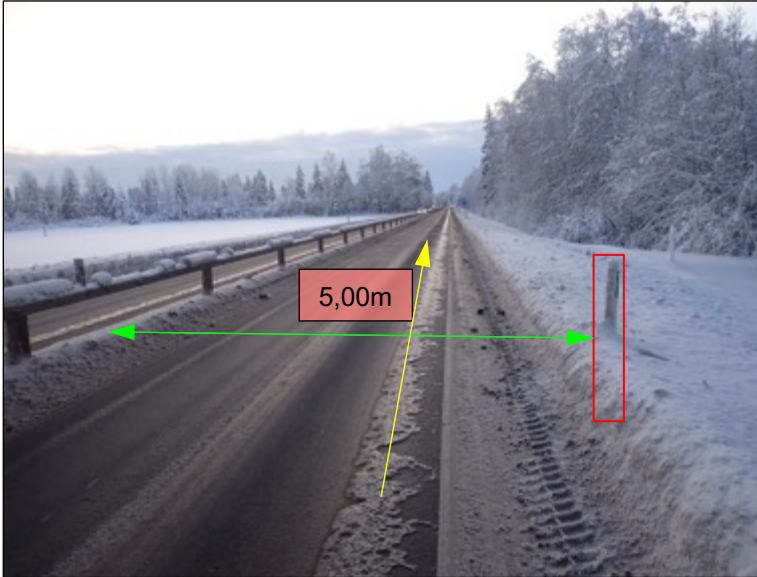
Google maps coordinates: 59.249068, 24.745076 <https://maps.app.goo.gl/zD1Cf438MgGbDnKA>



<b>Route surveys</b>	<b>Route</b> EE Paldiski – EE Tootsi	<b>Author</b> Fulmenn UAB	
<b>Project no. / Ref.:</b> RM_Tootsi_01T	<b>Dated</b> December 06, 2023	<b>Classification</b> Initial release	Page number 41 of 82

#### 4 TRANSPORT SURVEY

Location 35-2, (Road 15) Narrow road section

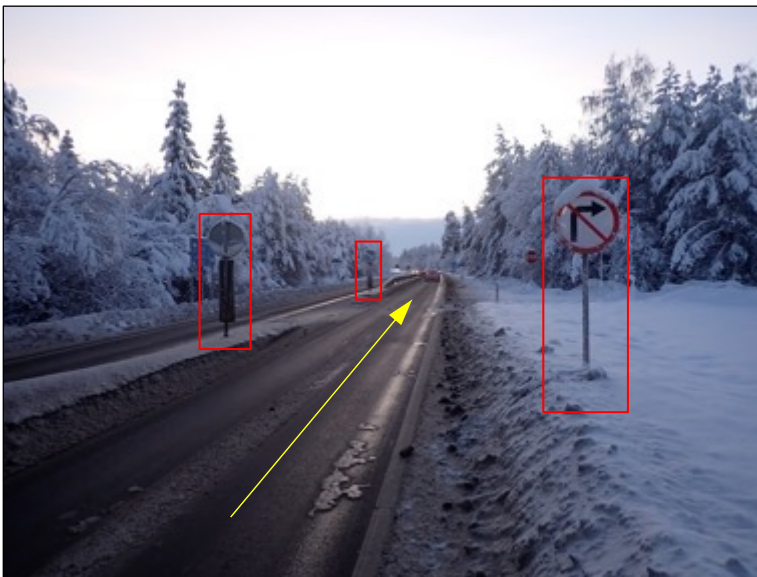


##### Actions:

- Ref. to Location 35-1; 35-2

Google maps coordinates: 59.249068, 24.745076 <https://maps.app.goo.gl/zD1Cf438MgGbhDnKA>

Location 36-1, (Road 15) Narrow road section




##### Actions:

- 3 road signs need to be made removable

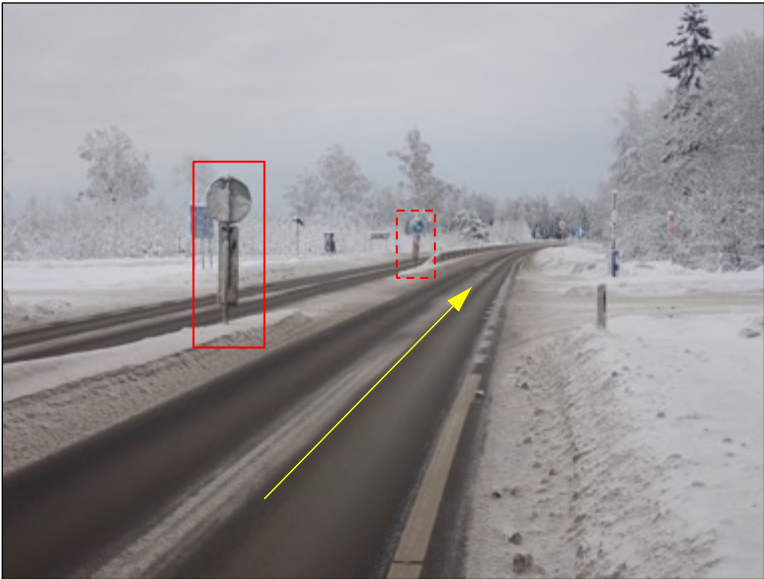
Google maps coordinates: 59.244468, 24.750655 <https://maps.app.goo.gl/4jjBwUvmVvSrAtyTA>



Route surveys	Route EE Paldiski – EE Tootsi	Author Fulmenn UAB	
Project no. / Ref.: RM_Tootsi_01T	Dated December 06, 2023	Classification Initial release	Page number 42 of 82

4 TRANSPORT SURVEY

Location 37-1, (Road 15) Narrow road section

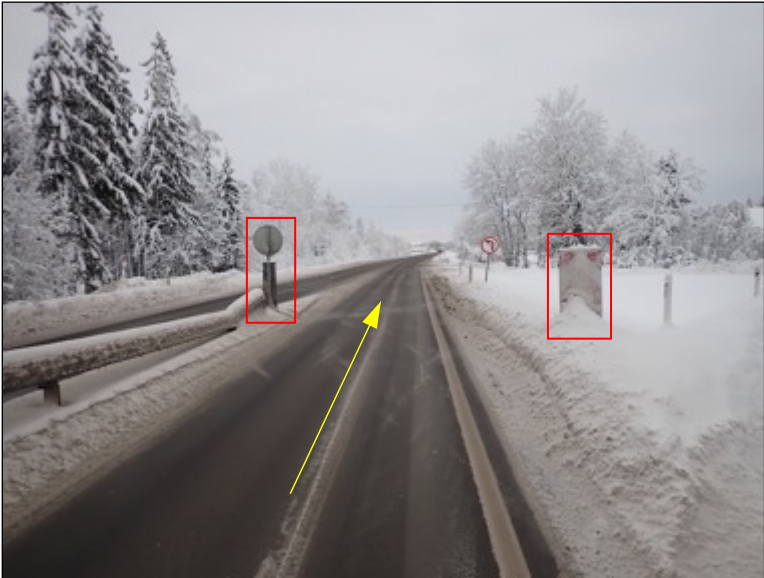


Actions:

- 1 road sign needs to be made removable
- 1 road sign is removable

Google maps coordinates: 59.232673, 24.771852 <https://maps.app.goo.gl/PdQCucfZLvd6sneg7>


Location 38-1, (Road 15) Narrow road section



Actions:

- 2 road signs need to be made removable

Google maps coordinates: 59.225525, 24.777323 <https://maps.app.goo.gl/HwLCg7TyGJYpDoHe8>

<b>Route surveys</b>	<b>Route</b> EE Paldiski – EE Tootsi	<b>Author</b> Fulmenn UAB	
<b>Project no. / Ref.:</b> RM_Tootsi_01T	<b>Dated</b> December 06, 2023	<b>Classification</b> Initial release	Page number 43 of 82

#### 4 TRANSPORT SURVEY

Location 39-1, (Road 15) Traffic island



##### Actions:

- No Action

Google maps coordinates: 59.116961, 24.790781 <https://maps.app.goo.gl/MxbZPRAkzPjCahkr6>


Location 40-1, (Road 15) Traffic island (Pass through the oncoming lane)



##### Actions:

- No Action

Google maps coordinates: 59.070416, 24.811988 <https://maps.app.goo.gl/DQiu74vV3urNzTM99>

<b>Route surveys</b>	<b>Route</b> EE Paldiski – EE Tootsi	<b>Author</b> Fulmenn UAB	
<b>Project no. / Ref.:</b> RM_Tootsi_01T	<b>Dated</b> December 06, 2023	<b>Classification</b> Initial release	Page number 44 of 82

## 4 TRANSPORT SURVEY

Location 41-1, (Road 15) Traffic island



### Actions:

- No Action

Google maps coordinates: 59.067505, 24.815956 <https://maps.app.goo.gl/Jdx7ZrZ2PnHEMYkG6>


Location 42-1, (Road 15) Traffic island (Pass through the oncoming lane)



### Actions:

- No Action

Google maps coordinates: 59.066050, 24.817190 <https://maps.app.goo.gl/DQmoHd6hkRcyCwQH8>

<b>Route surveys</b>	<b>Route</b> EE Paldiski – EE Tootsi	<b>Author</b> Fulmenn UAB	
<b>Project no. / Ref.:</b> RM_Tootsi_01T	<b>Dated</b> December 06, 2023	<b>Classification</b> Initial release	Page number 45 of 82

#### 4 TRANSPORT SURVEY

Location 43-1, (Road 15) Traffic island



##### Actions:

- No Action

Google maps coordinates: 59.063171, 24.820644 <https://maps.app.goo.gl/WR6BqdLGsr1PNm6b8>

Location 44-1, (Road 15) Traffic island



##### Actions:

- No Action

Google maps coordinates: 59.040649, 24.837636 <https://maps.app.goo.gl/AqXHvLxnrHxieT8k6>

Route surveys	Route EE Paldiski – EE Tootsi	Author Fulmenn UAB	
Project no. / Ref.: RM_Tootsi_01T	Dated December 06, 2023	Classification Initial release	Page number 46 of 82

4 TRANSPORT SURVEY

Location 45-1, (Road 15) Roundabout 15/141. First exit to road 141



Actions:

- Ref. to Location 45-1; 45-2; 45-3; 45-4
- 3 road signs need to be made removable

Google maps coordinates: 59.014549, 24.801107 <https://maps.app.goo.gl/7GDCo5zpcmtDETky6>

Location 45-2, (Road 15) Roundabout 15/141. First exit to road 141



Actions:

- Ref. to Location 45-1; 45-2; 45-3; 45-4

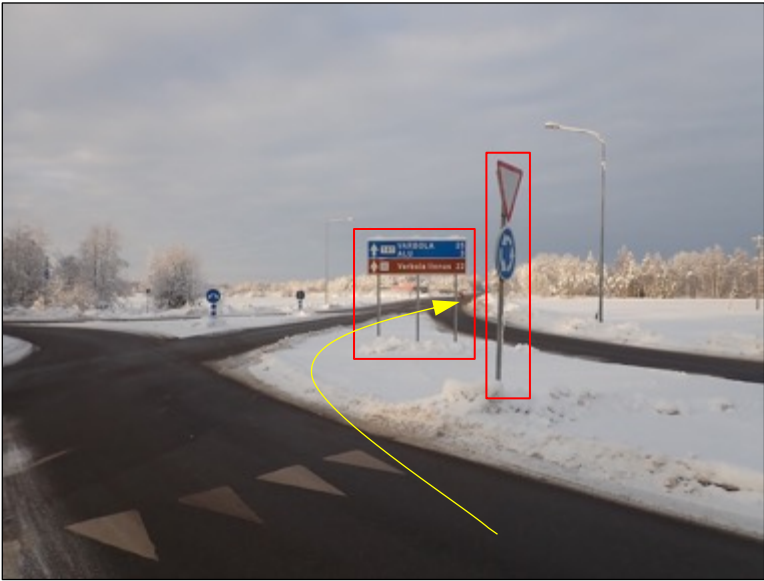
Google maps coordinates: 59.014549, 24.801107 <https://maps.app.goo.gl/7GDCo5zpcmtDETky6>



Route surveys	Route EE Paldiski – EE Tootsi	Author Fulmenn UAB	
Project no. / Ref.: RM_Tootsi_01T	Dated December 06, 2023	Classification Initial release	Page number 47 of 82

4 TRANSPORT SURVEY

Location 45-3, (Road 15) Roundabout 15/141. First exit to road 141



Actions:

- Ref. to Location 45-1; 45-2; 45-3; 45-4

Google maps coordinates: 59.014549, 24.801107 <https://maps.app.goo.gl/7GDCo5zpcmtDETky6>

Location 45-4, (Road 15) Roundabout 15/141. First exit to road 141



Actions:

- Ref. to Location 45-1; 45-2; 45-3; 45-4

Google maps coordinates: 59.014549, 24.801107 <https://maps.app.goo.gl/7GDCo5zpcmtDETky6>

Route surveys	Route EE Paldiski – EE Tootsi	Author Fulmenn UAB	
Project no. / Ref.: RM_Tootsi_01T	Dated December 06, 2023	Classification Initial release	Page number 48 of 82

4 TRANSPORT SURVEY

Ref. to Location 45-1; 45-2; 45-3; 45-4. Swept path No. 10



Google maps coordinates: 59.014549, 24.801107 <https://maps.app.goo.gl/7GDCo5zpcmtETky6>


Location 46-1, (Road 141) Turn left to road 125



Actions:

- Ref. to Locations 46-1; 46-2; 46-3
- 1 road sign needs to be made removable

Google maps coordinates: 59.019478, 24.782513 <https://maps.app.goo.gl/MVYC2cr3Cn5zpKMW6>

<b>Route surveys</b>	<b>Route</b> EE Paldiski – EE Tootsi	<b>Author</b> Fulmenn UAB	
<b>Project no. / Ref.:</b> RM_Tootsi_01T	<b>Dated</b> December 06, 2023	<b>Classification</b> Initial release	Page number 49 of 82

#### 4 TRANSPORT SURVEY

Location 46-2, (Road 141) Turn left to road 125



##### Actions:

- Ref. to Locations 46-1; 46-2; 46-3

Google maps coordinates: 59.019478, 24.782513 <https://maps.app.goo.gl/MVYC2cr3Cn5zpKMW6>

Location 46-3, (Road 141) Turn left to road 125



##### Actions:

- Ref. to Locations 46-1; 46-2; 46-3

Google maps coordinates: 59.019478, 24.782513 <https://maps.app.goo.gl/MVYC2cr3Cn5zpKMW6>

Route surveys	Route EE Paldiski – EE Tootsi	Author Fulmenn UAB	
Project no. / Ref.: RM_Tootsi_01T	Dated December 06, 2023	Classification Initial release	Page number 50 of 82

4 TRANSPORT SURVEY

Location 47-1, (Road 125) Roundabout 125/28. Second exit to road 125 (Enter through the oncoming lane)

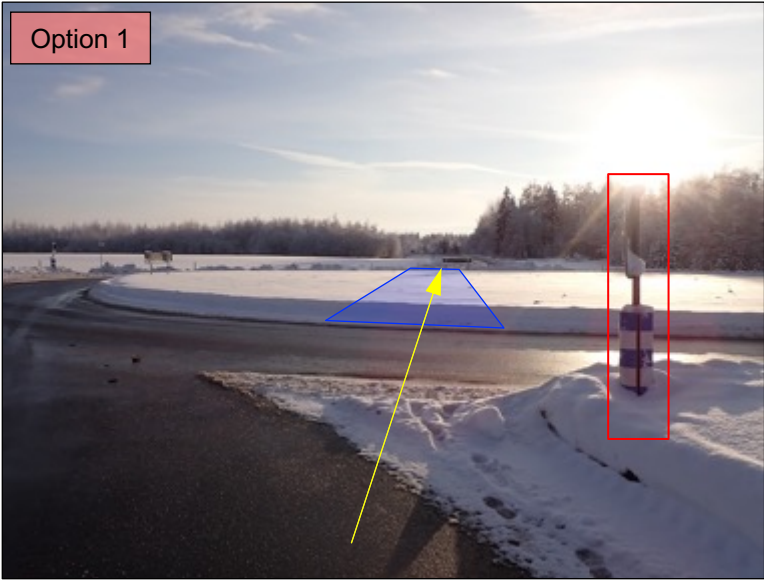


Actions:

- Ref. to Location 47-1; 47-2; 47-3; 47-4
- Option1:
  - 5 road signs need to be removable
  - Temporary road works are needed in the area marked in blue. Ca. 180,00m2. Area needs to be drivable on and in the level with the road
- Option2:
  - 6 road signs need to be removable
  - Temporary road works are needed in the area marked in blue. Ca. 120,00m2. Area needs to be drivable on and in the level with the road

Google maps coordinates: 58.994598, 24.771336 <https://maps.app.goo.gl/SmQCviCohTEpCg4s5>

Location 47-2, (Road 125) Roundabout 125/28. Second exit to road 125 (Enter through the oncoming lane)




Actions:

- Ref. to Location 47-1; 47-2; 47-3; 47-4

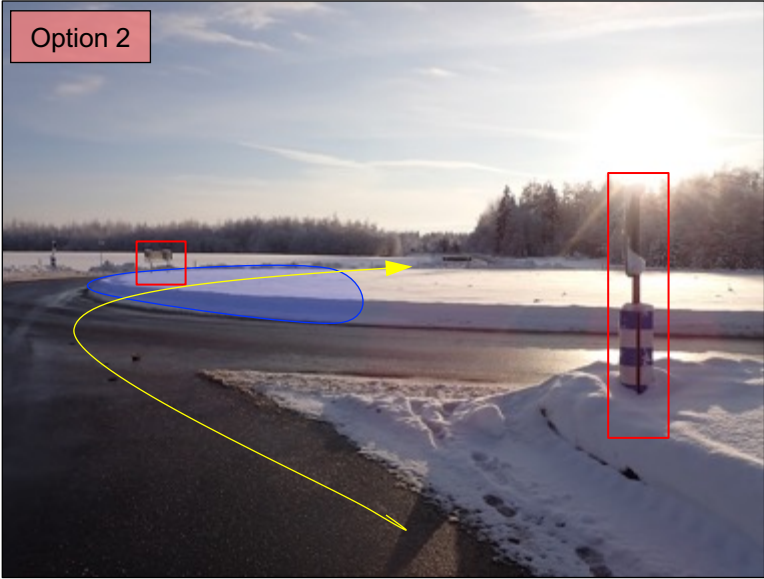
Google maps coordinates: 58.994598, 24.771336 <https://maps.app.goo.gl/SmQCviCohTEpCg4s5>



Route surveys	Route EE Paldiski – EE Tootsi	Author Fulmenn UAB	
Project no. / Ref.: RM_Tootsi_01T	Dated December 06, 2023	Classification Initial release	Page number 51 of 82

4 TRANSPORT SURVEY

Location 47-3, (Road 125) Roundabout 125/28. Second exit to road 125 (Enter through the oncoming lane)

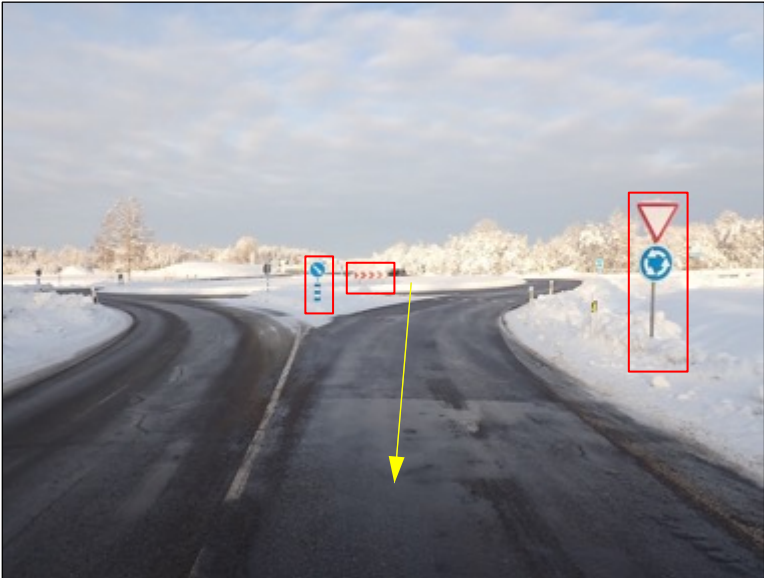


Actions:

- Ref. to Location 47-1; 47-2; 47-3; 47-4

Google maps coordinates: 58.994598, 24.771336 <https://maps.app.goo.gl/SmQCviCohTEpCg4s5>

Location 47-4, (Road 125) Roundabout 125/28. Second exit to road 125 (Enter through the oncoming lane)



Actions:

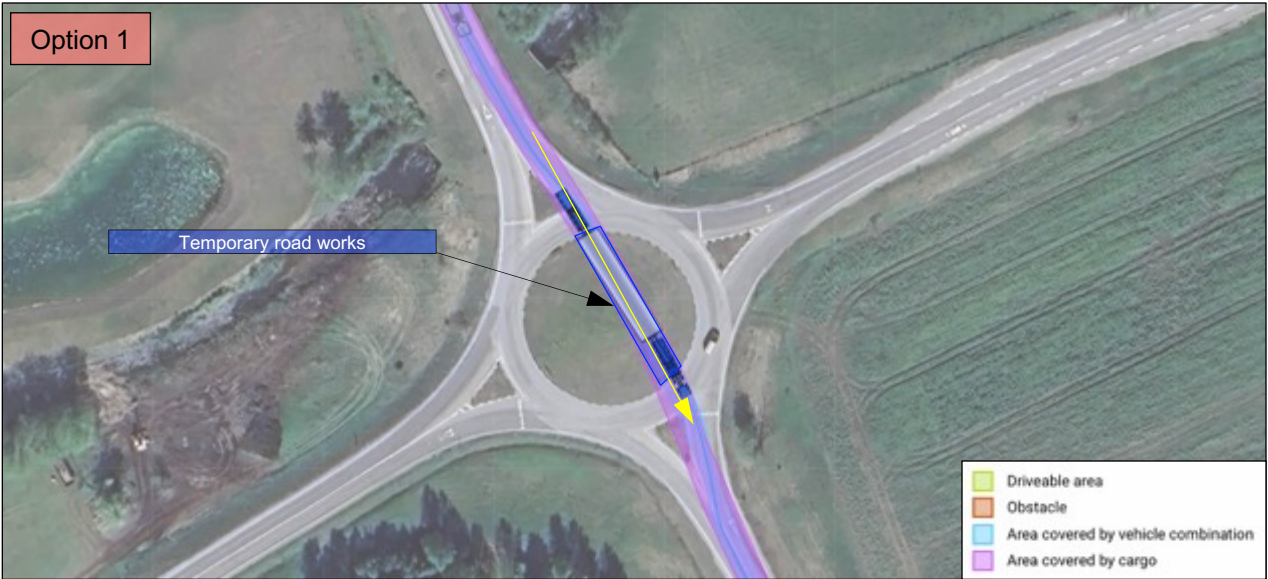
- Ref. to Location 47-1; 47-2; 47-3; 47-4

Google maps coordinates: 58.994598, 24.771336 <https://maps.app.goo.gl/SmQCviCohTEpCg4s5>

Route surveys	Route EE Paldiski – EE Tootsi	Author Fulmenn UAB	
Project no. / Ref.: RM_Tootsi_01T	Dated December 06, 2023	Classification Initial release	Page number 52 of 82

4 TRANSPORT SURVEY

Ref. to Location 47-1; 47-2; 47-4. Swept path No. 11-1




Google maps coordinates: 58.994598, 24.771336 <https://maps.app.goo.gl/SmQCviCohTEpCg4s5>

Ref. to Location 47-1; 47-3; 47-4. Swept path No. 11-2



Google maps coordinates: 58.994598, 24.771336 <https://maps.app.goo.gl/SmQCviCohTEpCg4s5>

<b>Route surveys</b>	<b>Route</b> EE Paldiski – EE Tootsi	<b>Author</b> Fulmenn UAB	
<b>Project no. / Ref.:</b> RM_Tootsi_01T	<b>Dated</b> December 06, 2023	<b>Classification</b> Initial release	Page number 53 of 82

#### 4 TRANSPORT SURVEY

##### Location 48-1, (Road 125) Branches



##### Actions:

- The height of the branches above the ground is approximately 3,00m, and a minimum ground clearance of 5,50m needs to be provided
- Branches to be trimmed to ensure safe ground and side clearance

Google maps coordinates: 58.990210, 24.780167 <https://maps.app.goo.gl/W5L7PgPCi6PknQiX8>

##### Location 49-1, (Road 125) Turn right to road 27




##### Actions:

- Ref. to Locations 49-1; 49-2
- 2 road signs are removable
- 1 road sign needs to be made removable

Google maps coordinates: 58.990025, 24.784662 <https://maps.app.goo.gl/RnDV9xUQPNVbQMnt6>



<b>Route surveys</b>	<b>Route</b> EE Paldiski – EE Tootsi	<b>Author</b> Fulmenn UAB	
<b>Project no. / Ref.:</b> RM_Tootsi_01T	<b>Dated</b> December 06, 2023	<b>Classification</b> Initial release	Page number 54 of 82

#### 4 TRANSPORT SURVEY

Location 49-2, (Road 125) Turn right to road 27



##### **Actions:**

- Ref. to Locations 49-1; 49-2

Google maps coordinates: 58.990025, 24.784662 <https://maps.app.goo.gl/RnDV9xUQPNVbQMnt6>

Location 50-1, (Road 27) Branches




##### **Actions:**

- The height of the branches above the ground is approximately 4,60m, and a minimum ground clearance of 5,50m needs to be provided
- Branches to be trimmed to ensure safe ground and side clearance

Google maps coordinates: 58.940651, 24.750443 <https://maps.app.goo.gl/oC96X5DpZsdUtCRQ6>



<b>Route surveys</b>	<b>Route</b> EE Paldiski – EE Tootsi	<b>Author</b> Fulmenn UAB	
<b>Project no. / Ref.:</b> RM_Tootsi_01T	<b>Dated</b> December 06, 2023	<b>Classification</b> Initial release	Page number 55 of 82

#### 4 TRANSPORT SURVEY

##### Location 51-1, (Road 27) Branches



##### Actions:

- The height of the branches above the ground is approximately 4,60m, and a minimum ground clearance of 5,50m needs to be provided
- Branches to be trimmed to ensure safe ground and side clearance

Google maps coordinates: 58.929274, 24.748066 <https://maps.app.goo.gl/W2nn1LFSKQnLfrjz8>


##### Location 52-1, (Road 27) Branches



##### Actions:

- The height of the branches above the ground is approximately 4,60m, and a minimum ground clearance of 5,50m needs to be provided
- Branches to be trimmed to ensure safe ground and side clearance

Google maps coordinates: 58.901280, 24.787258 <https://maps.app.goo.gl/2xGRqMbKq2QqfbtU8>

<b>Route surveys</b>	<b>Route</b> EE Paldiski – EE Tootsi	<b>Author</b> Fulmenn UAB	
<b>Project no. / Ref.:</b> RM_Tootsi_01T	<b>Dated</b> December 06, 2023	<b>Classification</b> Initial release	Page number 56 of 82

#### 4 TRANSPORT SURVEY

##### Location 53-1, (Road 27) Branches



##### Actions:

- The height of the branches above the ground is approximately 4,60m, and a minimum ground clearance of 5,50m needs to be provided
- Branches to be trimmed to ensure safe ground and side clearance

Google maps coordinates: 58.885368, 24.783972 <https://maps.app.goo.gl/MqCMw2wweBgtNaSm9>


##### Location 54-1, (Road 27) Branches



##### Actions:

- The height of the branches above the ground is approximately 4,60m, and a minimum ground clearance of 5,50m needs to be provided
- Branches to be trimmed to ensure safe ground and side clearance

Google maps coordinates: 58.880793, 24.780556 <https://maps.app.goo.gl/CSyMw38rCwp95cas8>

<b>Route surveys</b>	<b>Route</b> EE Paldiski – EE Tootsi	<b>Author</b> Fulmenn UAB	
<b>Project no. / Ref.:</b> RM_Tootsi_01T	<b>Dated</b> December 06, 2023	<b>Classification</b> Initial release	Page number 57 of 82

#### 4 TRANSPORT SURVEY

##### Location 55-1, (Road 27) Branches



##### Actions:

- The height of the branches above the ground is approximately 4,60m, and a minimum ground clearance of 5,50m needs to be provided
- Branches to be trimmed to ensure safe ground and side clearance

Google maps coordinates: 58.877741, 24.779729 <https://maps.app.goo.gl/1QfAx3HoYgpDarXh7>

##### Location 56-1, (Road 27) Branches




##### Actions:

- The height of the branches above the ground is approximately 4,60m, and a minimum ground clearance of 5,50m needs to be provided
- Branches to be trimmed to ensure safe ground and side clearance

Google maps coordinates: 58.876209, 24.780117 <https://maps.app.goo.gl/hjakt5BZUj9ueu4i9>



<b>Route surveys</b>	<b>Route</b> EE Paldiski – EE Tootsi	<b>Author</b> Fulmenn UAB	
<b>Project no. / Ref.:</b> RM_Tootsi_01T	<b>Dated</b> December 06, 2023	<b>Classification</b> Initial release	Page number 58 of 82

#### 4 TRANSPORT SURVEY

##### Location 57-1, (Road 27) Branches



##### **Actions:**

- The height of the branches above the ground is approximately 4,60m, and a minimum ground clearance of 5,50m needs to be provided
- Branches to be trimmed to ensure safe ground and side clearance

Google maps coordinates: 58.853816, 24.792882 <https://maps.app.goo.gl/Uq7RZPhdoPp5ApLn8>

##### Location 58-1, (Road 27) Branches




##### **Actions:**

- The height of the branches above the ground is approximately 4,60m, and a minimum ground clearance of 5,50m needs to be provided
- Branches to be trimmed to ensure safe ground and side clearance

Google maps coordinates: 58.823790, 24.798398 <https://maps.app.goo.gl/Pu5YF7G5YaczaZVv8>



<b>Route surveys</b>	<b>Route</b> EE Paldiski – EE Tootsi	<b>Author</b> Fulmenn UAB	
<b>Project no. / Ref.:</b> RM_Tootsi_01T	<b>Dated</b> December 06, 2023	<b>Classification</b> Initial release	Page number 59 of 82

#### 4 TRANSPORT SURVEY

##### Location 59-1, (Road 27) Branches



##### Actions:

- The height of the branches above the ground is approximately 4,60m, and a minimum ground clearance of 5,50m needs to be provided
- Branches to be trimmed to ensure safe ground and side clearance

Google maps coordinates: 58.816411, 24.803625 <https://maps.app.goo.gl/aGWgUkEaYwWCiLDU8>


##### Location 60-1, (Road 27) Branches



##### Actions:

- The height of the branches above the ground is approximately 4,60m, and a minimum ground clearance of 5,50m needs to be provided
- Branches to be trimmed to ensure safe ground and side clearance

Google maps coordinates: 58.802401, 24.812670 <https://maps.app.goo.gl/YUyhFvRdLBAiyM6M7>

<b>Route surveys</b>	<b>Route</b> EE Paldiski – EE Tootsi	<b>Author</b> Fulmenn UAB	
<b>Project no. / Ref.:</b> RM_Tootsi_01T	<b>Dated</b> December 06, 2023	<b>Classification</b> Initial release	Page number 60 of 82

#### 4 TRANSPORT SURVEY

##### Location 61-1, (Road 27) Branches



##### Actions:

- The height of the branches above the ground is approximately 4,60m, and a minimum ground clearance of 5,50m needs to be provided
- Branches to be trimmed to ensure safe ground and side clearance

Google maps coordinates: 58.801849, 24.813022 <https://maps.app.goo.gl/VfNPTW4esihC5PsK6>


##### Location 62-1, (Road 27) Branches



##### Actions:

- The height of the branches above the ground is approximately 4,60m, and a minimum ground clearance of 5,50m needs to be provided
- Branches to be trimmed to ensure safe ground and side clearance

Google maps coordinates: 58.788262, 24.818742 <https://maps.app.goo.gl/PA2AV95BjqXzKoJw8>

<b>Route surveys</b>	<b>Route</b> EE Paldiski – EE Tootsi	<b>Author</b> Fulmenn UAB	
<b>Project no. / Ref.:</b> RM_Tootsi_01T	<b>Dated</b> December 06, 2023	<b>Classification</b> Initial release	Page number 61 of 82

#### 4 TRANSPORT SURVEY

##### Location 63-1, (Road 27) Branches



##### Actions:

- The height of the branches above the ground is approximately 4,60m, and a minimum ground clearance of 5,50m needs to be provided
- Branches to be trimmed to ensure safe ground and side clearance

Google maps coordinates: 58.745778, 24.811619 <https://maps.app.goo.gl/u6FKGc39xSNPWKmg7>

##### Location 64-1, (Road 27) Branches




##### Actions:

- The height of the branches above the ground is approximately 4,60m, and a minimum ground clearance of 5,50m needs to be provided
- Branches to be trimmed to ensure safe ground and side clearance

Google maps coordinates: 58.690538, 24.781800 <https://maps.app.goo.gl/55WWz7pg5jisLk3y9>



<b>Route surveys</b>	<b>Route</b> EE Paldiski – EE Tootsi	<b>Author</b> Fulmenn UAB	
<b>Project no. / Ref.:</b> RM_Tootsi_01T	<b>Dated</b> December 06, 2023	<b>Classification</b> Initial release	Page number 62 of 82

#### 4 TRANSPORT SURVEY

##### Location 65-1, (Road 27) Branches



##### **Actions:**

- The height of the branches above the ground is approximately 4,00m, and a minimum ground clearance of 5,50m needs to be provided
- Branches to be trimmed to ensure safe ground and side clearance

Google maps coordinates: 58.688699, 24.779961 <https://maps.app.goo.gl/MF5Zpc5YB7Vp8G576>

##### Location 66-1, (Road 27) Branches




##### **Actions:**

- The height of the branches above the ground is approximately 4,60m, and a minimum ground clearance of 5,50m needs to be provided
- Branches to be trimmed to ensure safe ground and side clearance

Google maps coordinates: 58.687091, 24.778402 <https://maps.app.goo.gl/piNzAYKpctN33qjg8>



<b>Route surveys</b>	<b>Route</b> EE Paldiski – EE Tootsi	<b>Author</b> Fulmenn UAB	
<b>Project no. / Ref.:</b> RM_Tootsi_01T	<b>Dated</b> December 06, 2023	<b>Classification</b> Initial release	Page number 63 of 82

#### 4 TRANSPORT SURVEY

##### Location 67-1, (Road 27) Branches



##### Actions:

- The height of the branches above the ground is approximately 4,60m, and a minimum ground clearance of 5,50m needs to be provided
- Branches to be trimmed to ensure safe ground and side clearance

Google maps coordinates: 58.686340, 24.777671 <https://maps.app.goo.gl/Ee6DpioEt3aGrkt6>


##### Location 68-1, (Road 27) Branches



##### Actions:

- The height of the branches above the ground is approximately 4,60m, and a minimum ground clearance of 5,50m needs to be provided
- Branches to be trimmed to ensure safe ground and side clearance

Google maps coordinates: 58.681373, 24.764971 <https://maps.app.goo.gl/aig5EK6VwXa5DcbR9>

<b>Route surveys</b>	<b>Route</b> EE Paldiski – EE Tootsi	<b>Author</b> Fulmenn UAB	
<b>Project no. / Ref.:</b> RM_Tootsi_01T	<b>Dated</b> December 06, 2023	<b>Classification</b> Initial release	Page number 64 of 82

#### 4 TRANSPORT SURVEY

##### Location 68-2, (Road 27) Branches



##### Actions:

- The height of the branches above the ground is approximately 4,60m, and a minimum ground clearance of 5,50m needs to be provided
- Branches to be trimmed to ensure safe ground and side clearance

Google maps coordinates: 58.681373, 24.764971 <https://maps.app.goo.gl/aig5EK6VwXa5DcbR9>


##### Location 69-1, (Road 27) Branches



##### Actions:

- The height of the branches above the ground is approximately 4,60m, and a minimum ground clearance of 5,50m needs to be provided
- Branches to be trimmed to ensure safe ground and side clearance

Google maps coordinates: 58.680734, 24.763532 <https://maps.app.goo.gl/RWNdGcvZiCRfvq8G7>

<b>Route surveys</b>	<b>Route</b> EE Paldiski – EE Tootsi	<b>Author</b> Fulmenn UAB	
<b>Project no. / Ref.:</b> RM_Tootsi_01T	<b>Dated</b> December 06, 2023	<b>Classification</b> Initial release	Page number 65 of 82

#### 4 TRANSPORT SURVEY

##### Location 70-1, (Road 27) Branches



##### Actions:

- The height of the branches above the ground is approximately 4,60m, and a minimum ground clearance of 5,50m needs to be provided
- Branches to be trimmed to ensure safe ground and side clearance

Google maps coordinates: 58.677930, 24.759692 <https://maps.app.goo.gl/FV4aPxDJwvbTNaSv5>

##### Location 71-1, (Road 27) Branches




##### Actions:

- The height of the branches above the ground is approximately 4,60m, and a minimum ground clearance of 5,50m needs to be provided
- Branches to be trimmed to ensure safe ground and side clearance

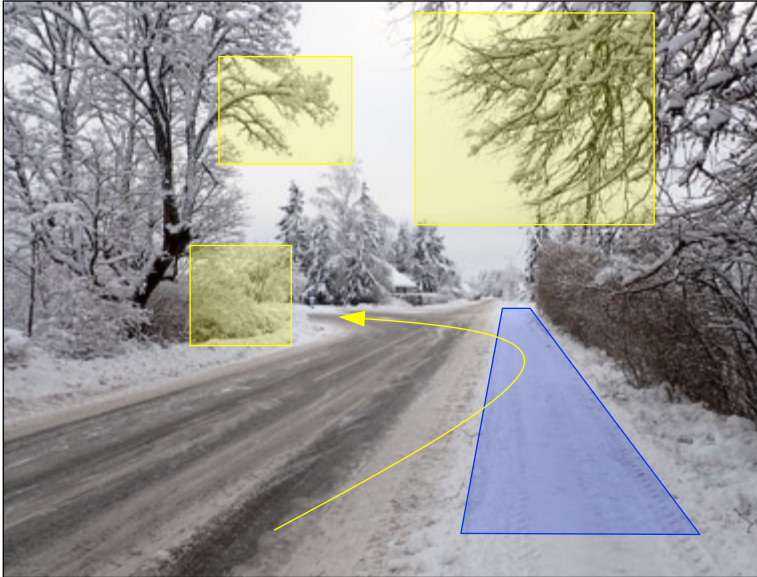
Google maps coordinates: 58.673989, 24.758011 <https://maps.app.goo.gl/V53WwTbKYbBHNPnY7>



<b>Route surveys</b>	<b>Route</b> EE Paldiski – EE Tootsi	<b>Author</b> Fulmenn UAB	
<b>Project no. / Ref.:</b> RM_Tootsi_01T	<b>Dated</b> December 06, 2023	<b>Classification</b> Initial release	Page number 66 of 82

#### 4 TRANSPORT SURVEY

Location 72-1, (Road 27) Turn left to the road 58. Branches



##### Actions:

- Ref. to Location 72-1; 72-2; 72-3; 72-4; 72-5
- Branches and bushes to be trimmed to ensure safe ground and side clearance
- 1 road sign is removable
- 2 road signs needs to be made removable
- Area marked in red needs to be free of obstacles (parked vehicles). Traffic signs "parking is prohibited" (from 22:00 to 06:00) to be installed
- Temporary road works are needed in the area marked in blue. Ca. 70,00m<sup>2</sup>

Google maps coordinates: 58.669386, 24.756041 <https://maps.app.goo.gl/SB1sdBtJde9QcTqh9>

Location 72-2, (Road 27) Turn left to the road 58. Branches




##### Actions:

- Ref. to Location 72-1; 72-2; 72-3; 72-4; 72-5

Google maps coordinates: 58.669386, 24.756041 <https://maps.app.goo.gl/SB1sdBtJde9QcTqh9>



<b>Route surveys</b>	<b>Route</b> EE Paldiski – EE Tootsi	<b>Author</b> Fulmenn UAB	
<b>Project no. / Ref.:</b> RM_Tootsi_01T	<b>Dated</b> December 06, 2023	<b>Classification</b> Initial release	Page number 67 of 82

#### 4 TRANSPORT SURVEY

Location 72-3, (Road 27) Turn left to the road 58. Branches



##### Actions:

- Ref. to Location 72-1; 72-2; 72-3; 72-4; 72-5

Google maps coordinates: 58.669386, 24.756041 <https://maps.app.goo.gl/SB1sdBtJde9QcTqh9>


Location 72-4, (Road 27) Turn left to the road 58. Branches



##### Actions:

- Ref. to Location 72-1; 72-2; 72-3; 72-4; 72-5

Google maps coordinates: 58.669386, 24.756041 <https://maps.app.goo.gl/SB1sdBtJde9QcTqh9>

Route surveys	Route EE Paldiski – EE Tootsi	Author Fulmenn UAB	
Project no. / Ref.: RM_Tootsi_01T	Dated December 06, 2023	Classification Initial release	Page number 68 of 82

4 TRANSPORT SURVEY

Location 72-5, (Road 27) Turn left to the road 58. Branches

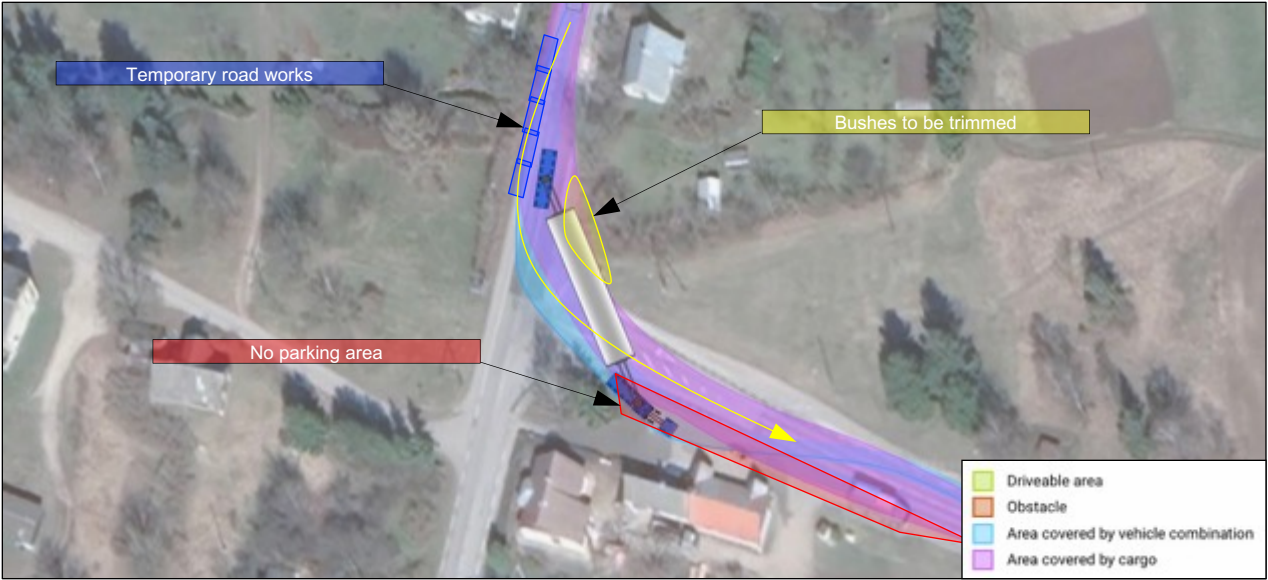


Actions:


- Ref. to Location 72-1; 72-2; 72-3; 72-4; 72-5

Google maps coordinates: 58.669386, 24.756041 <https://maps.app.goo.gl/SB1sdBtJde9QcTqh9>

Ref. to Location 72-1; 72-2; 72-3; 72-4; 72-5. Swept path No. 12



Google maps coordinates: 58.669386, 24.756041 <https://maps.app.goo.gl/SB1sdBtJde9QcTqh9>

<b>Route surveys</b>	<b>Route</b> EE Paldiski – EE Tootsi	<b>Author</b> Fulmenn UAB	
<b>Project no. / Ref.:</b> RM_Tootsi_01T	<b>Dated</b> December 06, 2023	<b>Classification</b> Initial release	Page number 69 of 82

#### 4 TRANSPORT SURVEY

##### Location 73-1, (Road 58) Branches



##### Actions:

- The height of the branches above the ground is approximately 4,00m, and a minimum ground clearance of 5,50m needs to be provided
- Branches to be trimmed to ensure safe ground and side clearance

Google maps coordinates: 58.663434, 24.813360 <https://maps.app.goo.gl/j3PF52FujoSgJuGE8>

##### Location 74-1, (Road 58) Branches




##### Actions:

- The height of the branches above the ground is approximately 4,00m, and a minimum ground clearance of 5,50m needs to be provided
- Branches to be trimmed to ensure safe ground and side clearance

Google maps coordinates: 58.662476, 24.818180 <https://maps.app.goo.gl/F9UQED74Dwyyikez6>



<b>Route surveys</b>	<b>Route</b> EE Paldiski – EE Tootsi	<b>Author</b> Fulmenn UAB	
<b>Project no. / Ref.:</b> RM_Tootsi_01T	<b>Dated</b> December 06, 2023	<b>Classification</b> Initial release	Page number 70 of 82

#### 4 TRANSPORT SURVEY

##### Location 75-1, (Road 58) Branches

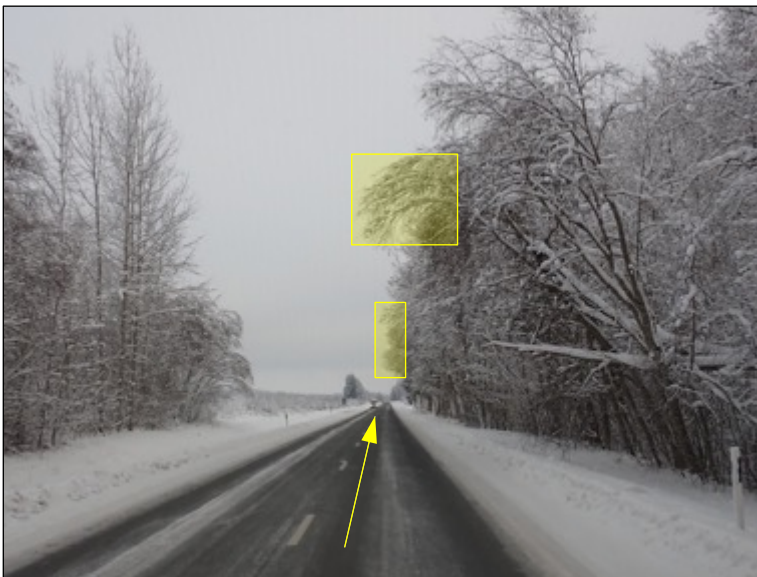


##### Actions:

- The height of the branches above the ground is approximately 4,00m, and a minimum ground clearance of 5,50m needs to be provided
- Branches to be trimmed to ensure safe ground and side clearance

Google maps coordinates: 58.658328, 24.832034 <https://maps.app.goo.gl/2RhCyWQVvymfbjYX8>

##### Location 76-1, (Road 58) Branches




##### Actions:

- The height of the branches above the ground is approximately 4,00m, and a minimum ground clearance of 5,50m needs to be provided
- Branches to be trimmed to ensure safe ground and side clearance

Google maps coordinates: 58.657592, 24.834033 <https://maps.app.goo.gl/55Kuk4YUS2k5XEc18>



<b>Route surveys</b>	<b>Route</b> EE Paldiski – EE Tootsi	<b>Author</b> Fulmenn UAB	
<b>Project no. / Ref.:</b> RM_Tootsi_01T	<b>Dated</b> December 06, 2023	<b>Classification</b> Initial release	<b>Page number</b> 71 of 82

#### 4 TRANSPORT SURVEY

Location 77-1, (Road 58) Turn right to road 254



##### Actions:

- Ref. to Location 77-1; 77-2
- 2 road signs need to be made removable

Google maps coordinates: 58.626223, 24.923801 <https://maps.app.goo.gl/M7cZyHhf5KrGAc7Q7>


Location 77-2, (Road 58) Turn right to road 254



##### Actions:

- Ref. to Location 77-1; 77-2

Google maps coordinates: 58.626223, 24.923801 <https://maps.app.goo.gl/M7cZyHhf5KrGAc7Q7>

<b>Route surveys</b>	<b>Route</b> EE Paldiski – EE Tootsi	<b>Author</b> Fulmenn UAB	
<b>Project no. / Ref.:</b> RM_Tootsi_01T	<b>Dated</b> December 06, 2023	<b>Classification</b> Initial release	Page number 72 of 82

#### 4 TRANSPORT SURVEY

##### Location 78-1, (Road 254) Branches

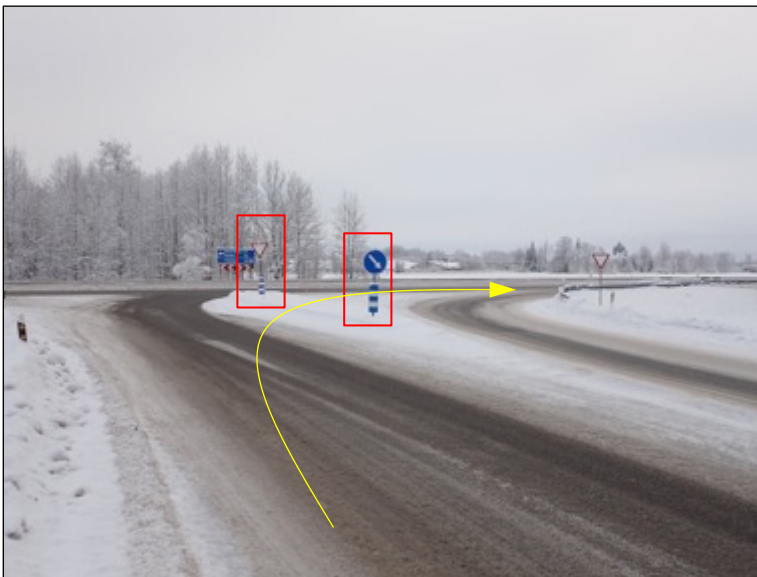


##### Actions:

- The height of the branches above the ground is approximately 4,00m, and a minimum ground clearance of 5,50m needs to be provided
- Branches to be trimmed to ensure safe ground and side clearance

Google maps coordinates: 58.623683, 24.923390 <https://maps.app.goo.gl/N2Eq5bKNMezs5ysQ7>

##### Location 79-1, (Road 254) Turn right to road 5



##### Actions:

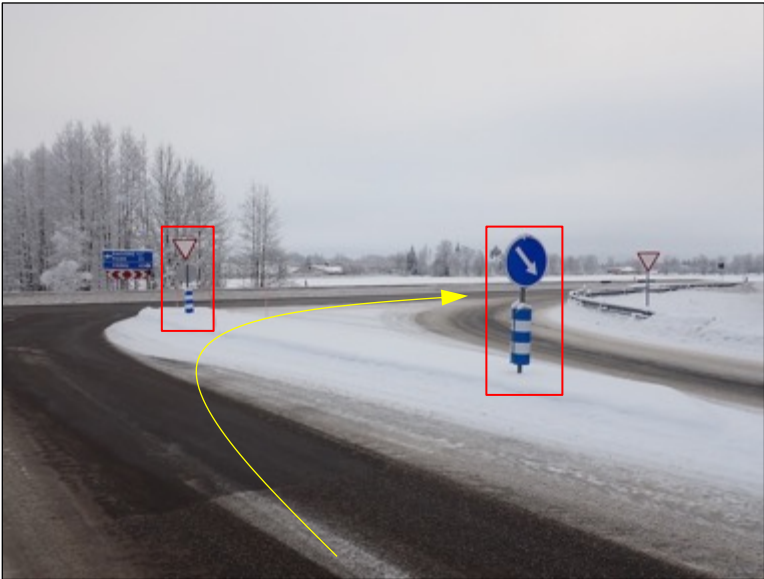
- Ref. to Locations 79-1; 79-2; 79-3; 79-4
- 2 road signs need to be made removable

Google maps coordinates: 58.619996, 24.926302 <https://maps.app.goo.gl/LGwkU8SfFrNBwKzs5>

Route surveys	Route EE Paldiski – EE Tootsi	Author Fulmenn UAB	
Project no. / Ref.: RM_Tootsi_01T	Dated December 06, 2023	Classification Initial release	Page number 73 of 82

4 TRANSPORT SURVEY

Location 79-2, (Road 254) Turn right to road 5



Actions:

- Ref. to Locations 79-1; 79-2; 79-3; 79-4

Google maps coordinates: 58.619996, 24.926302 <https://maps.app.goo.gl/LGwkU8SfFrNBwKzs5>

Location 79-3, (Road 254) Turn right to road 5



Actions:

- Ref. to Locations 79-1; 79-2; 79-3; 79-4

Google maps coordinates: 58.619996, 24.926302 <https://maps.app.goo.gl/LGwkU8SfFrNBwKzs5>

Route surveys	Route EE Paldiski – EE Tootsi	Author Fulmenn UAB	
Project no. / Ref.: RM_Tootsi_01T	Dated December 06, 2023	Classification Initial release	Page number 74 of 82

4 TRANSPORT SURVEY

Location 79-4, (Road 254) Turn right to road 5



Actions:

- Ref. to Locations 79-1; 79-2; 79-3; 79-4


Google maps coordinates: 58.619996, 24.926302 <https://maps.app.goo.gl/LGwkU8SfFrNBwKzs5>

Ref. to Locations 79-1; 79-2; 79-3; 79-4. Swept path No. 13



Google maps coordinates: 58.619996, 24.926302 <https://maps.app.goo.gl/LGwkU8SfFrNBwKzs5>



<b>Route surveys</b>	<b>Route</b> EE Paldiski – EE Tootsi	<b>Author</b> Fulmenn UAB	
<b>Project no. / Ref.:</b> RM_Tootsi_01T	<b>Dated</b> December 06, 2023	<b>Classification</b> Initial release	Page number 75 of 82

#### 4 TRANSPORT SURVEY

Location 80-1, (Road 5) Turn right to road 271. Branches



##### Actions:

- Ref. to Location 80-1; 80-2; 80-3
- 2 road signs need to be made removable
- The height of the branches above the ground is approximately 4,00m, and a minimum ground clearance of 5,50m needs to be provided
- Branches to be trimmed to ensure safe ground and side clearance

Google maps coordinates: 58.553703, 24.854129 <https://maps.app.goo.gl/3KcaDkuNP6ZhpNwh9>


Location 80-2, (Road 5) Turn right to road 271. Branches



##### Actions:

- Ref. to Location 80-1; 80-2; 80-3

Google maps coordinates: 58.553703, 24.854129 <https://maps.app.goo.gl/3KcaDkuNP6ZhpNwh9>

Route surveys	Route EE Paldiski – EE Tootsi	Author Fulmenn UAB	
Project no. / Ref.: RM_Tootsi_01T	Dated December 06, 2023	Classification Initial release	Page number 76 of 82

4 TRANSPORT SURVEY

Location 80-3, (Road 5) Turn right to road 271. Branches



Actions:


- Ref. to Location 80-1; 80-2; 80-3

Google maps coordinates: 58.553703, 24.854129 <https://maps.app.goo.gl/3KcaDkuNP6ZhpNwh9>

Ref. to Location 80-1; 80-2; 80-3. Swept path No. 14



Google maps coordinates: 58.553703, 24.854129 <https://maps.app.goo.gl/3KcaDkuNP6ZhpNwh9>

<b>Route surveys</b>	<b>Route</b> EE Paldiski – EE Tootsi	<b>Author</b> Fulmenn UAB	
<b>Project no. / Ref.:</b> RM_Tootsi_01T	<b>Dated</b> December 06, 2023	<b>Classification</b> Initial release	Page number 77 of 82

#### 4 TRANSPORT SURVEY

##### Location 81-1, (Road 271) Branches



##### **Actions:**

- The height of the branches above the ground is approximately 4,00m, and a minimum ground clearance of 5,50m needs to be provided
- Branches to be trimmed to ensure safe ground and side clearance

Google maps coordinates: 58.555389, 24.849890 <https://maps.app.goo.gl/waadjQPTQ1ivSbqm6>


##### Location 82-1, (Road 271) Turn right onto road 271



##### **Actions:**

- Ref. to Locations 82-1; 82-2; 82-3
- 3 road signs need to be made removable

Google maps coordinates: 58.567604, 24.809893 <https://maps.app.goo.gl/sJ6EYbNeaxLfuQmv5>

<b>Route surveys</b>	<b>Route</b> EE Paldiski – EE Tootsi	<b>Author</b> Fulmenn UAB	
<b>Project no. / Ref.:</b> RM_Tootsi_01T	<b>Dated</b> December 06, 2023	<b>Classification</b> Initial release	Page number 78 of 82

#### 4 TRANSPORT SURVEY

Location 82-2, (Road 271) Turn right onto road 271



##### Actions:

- Ref. to Locations 82-1; 82-2; 82-3

Google maps coordinates: 58.567604, 24.809893 <https://maps.app.goo.gl/sJ6EYbNeaxLfuQmv5>

Location 82-3, (Road 271) Turn right onto road 271



##### Actions:

- Ref. to Locations 82-1; 82-2; 82-3

Google maps coordinates: 58.567604, 24.809893 <https://maps.app.goo.gl/sJ6EYbNeaxLfuQmv5>



Route surveys	Route EE Paldiski – EE Tootsi	Author Fulmenn UAB	
Project no. / Ref.: RM_Tootsi_01T	Dated December 06, 2023	Classification Initial release	Page number 79 of 82

4 TRANSPORT SURVEY

Ref. to Locations 82-1; 82-2; 82-3. Swept path No. 15



Google maps coordinates: 58.567604, 24.809893 <https://maps.app.goo.gl/sJ6EYbNeaxLfuQmv5>


Location 83-1, (Road 271) Continue straight on the main road. Branches



Actions:

- Ref. to Location 83-1; 83-2; 83-3
- The height of the branches above the ground is approximately 4,00m, and a minimum ground clearance of 5,50m needs to be provided
- Branches to be trimmed to ensure safe ground and side clearance
- 1 road sign needs to be made removable
- Temporary road works are needed in the area marked in blue. Ca. 250,00m2. Area needs to be drivable on and in the level with the road

Google maps coordinates: 58.583029, 24.792297 <https://maps.app.goo.gl/XwQqn3Re83ahnjiHaA>

<b>Route surveys</b>	<b>Route</b> EE Paldiski – EE Tootsi	<b>Author</b> Fulmenn UAB	
<b>Project no. / Ref.:</b> RM_Tootsi_01T	<b>Dated</b> December 06, 2023	<b>Classification</b> Initial release	Page number 80 of 82

## 4 TRANSPORT SURVEY

Location 83-2, (Road 271) Continue straight on the main road. Branches



### Actions:

- Ref. to Location 83-1; 83-2; 83-3

Google maps coordinates: 58.583029, 24.792297 <https://maps.app.goo.gl/XwQqn3Re83ahniHaA>


Location 83-3, (Road 271) Continue straight on the main road. Branches



### Actions:

- Ref. to Location 83-1; 83-2; 83-3

Google maps coordinates: 58.583029, 24.792297 <https://maps.app.goo.gl/XwQqn3Re83ahniHaA>

<b>Route surveys</b>	<b>Route</b> EE Paldiski – EE Tootsi	<b>Author</b> Fulmenn UAB	
<b>Project no. / Ref.:</b> RM_Tootsi_01T	<b>Dated</b> December 06, 2023	<b>Classification</b> Initial release	Page number 81 of 82

## 4 TRANSPORT SURVEY

Location 84-1, (Road 271) End of the route. Branches




### Actions:

- The height of the branches above the ground is approximately 4,00m, and a minimum ground clearance of 5,50m needs to be provided
- Branches to be trimmed to ensure safe ground and side clearance

Google maps coordinates: 58.589001, 24.784355 <https://maps.app.goo.gl/jabfqf7GmwX74gKXA>



<b>Route surveys</b>	<b>Route</b> EE Paldiski – EE Tootsi	<b>Author</b> Fulmenn UAB	
<b>Project no. / Ref.:</b> RM_Tootsi_01T	<b>Dated</b> December 06, 2023	<b>Classification</b> Initial release	Page number 82 of 82

## 5 NOTES

UAB Fulmenn expects that all road modifications will be implemented according to the scheduled timeframe and in full compliance with the necessary rules and regulations of Estonian laws.

It is important to ensure that all required road signs are easily removable or can be switched to temporary ones. This will help save time when it comes to taking them down and putting them back up.

On the link from Google Maps we see that some company in Estonia has already done similar work for another project: <https://maps.app.goo.gl/GxysZUWaR8uNBBJ37>

